



SELF-CONTAINED FLAKER

FM-300AKE(-SB)(KR)
FM-300AKE-N(-SB)(KR)
FM-300AKE-SB(HS)
FM-300AKE-N-SB(HS)

PARTS LIST

[HE] [KOREA]

F081,
F081-C101, F081-C106, F081-C107, F081-C130
F081-C131, F081-C161, F081-C162, F081-C170
F081-C171

B-1 MAY. 2012
C-0 JAN. 2013
D-0 JAN. 2014
D-1 JAN. 2014
E-0 JAN. 2015
E-2 SEP. 2015
H-1 JAN. 2018
H-2 JUL. 2018
H-4 DEC. 2018
K-1 JAN. 2020

F081-3688 (0721)

List of Specifications

FM-300AKE	F081	50Hz
	F081-C130	60Hz
FM-300AKE(KR)	F081-C161	1 Φ /220V/60Hz
FM-300AKE-SB	F081-C101	50Hz, Chasiss : SUS304
FM-300AKE-N	F081-C106	50Hz, Nugget type
	F081-C131	60Hz, Nugget type
FM-300AKE-N(KR)	F081-C162	1 Φ /220V/60Hz, Nugget type
FM-300AKE-N-SB	F081-C107	50Hz, Nugget type, Chasiss : SUS304
FM-300AKE-SB(HS)	F081-C170	Chasiss : SUS304
FM-300AKE-N-SB(HS)	F081-C171	Nugget type, Chasiss : SUS304

Auxiliary Codes

Auxiliary Code Breakdown

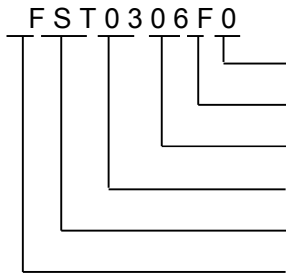
The auxiliary code is the first two characters in the serial number. The first character indicates the year. Years progress or regress in alphabetical order. The series runs from "A" through "V" and the letters "I" and "O" are skipped. The second character indicates significant part changes within a year. Base is "0" and this number advances for each change. In cases where there is a letter in parentheses, this designates the month. This is the last character in the serial number. The series runs from "(A)" through "(M)" and the letter "(I)" is skipped. This designation is only included when identifying a parts change within an auxiliary code.

Note About Ordering Parts

Most assemblies cannot be ordered as complete units; parts in the assemblies generally must be ordered separately.

FASTENER PART NUMBER

SCREWS

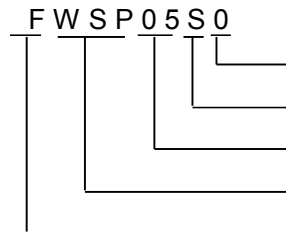


Special treatment (0 - 9)
 Material *1
 Length (mm)
 Nominal diameter (mm)
 Description *2
 Fastener

*1 Material

- F: Steel
- S: Austenitic stainless steel
- M: Martensitic stainless steel
- B: Copper alloy
- P: Polycarbonate
- N: Polyamide
- V: PVC
- A: ABS
- X: Polyacetal
- L: Aluminum

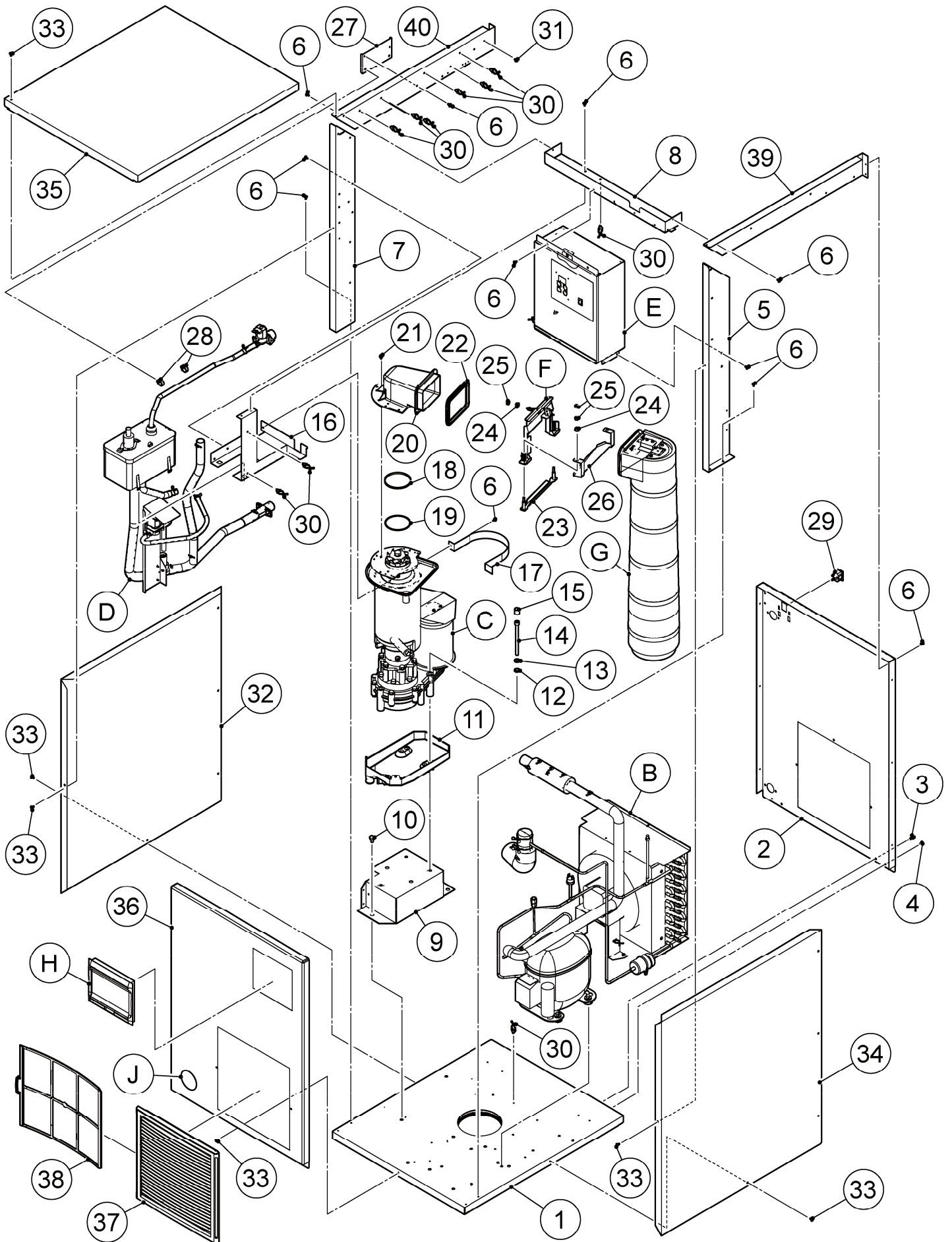
NUTS & WASHERS

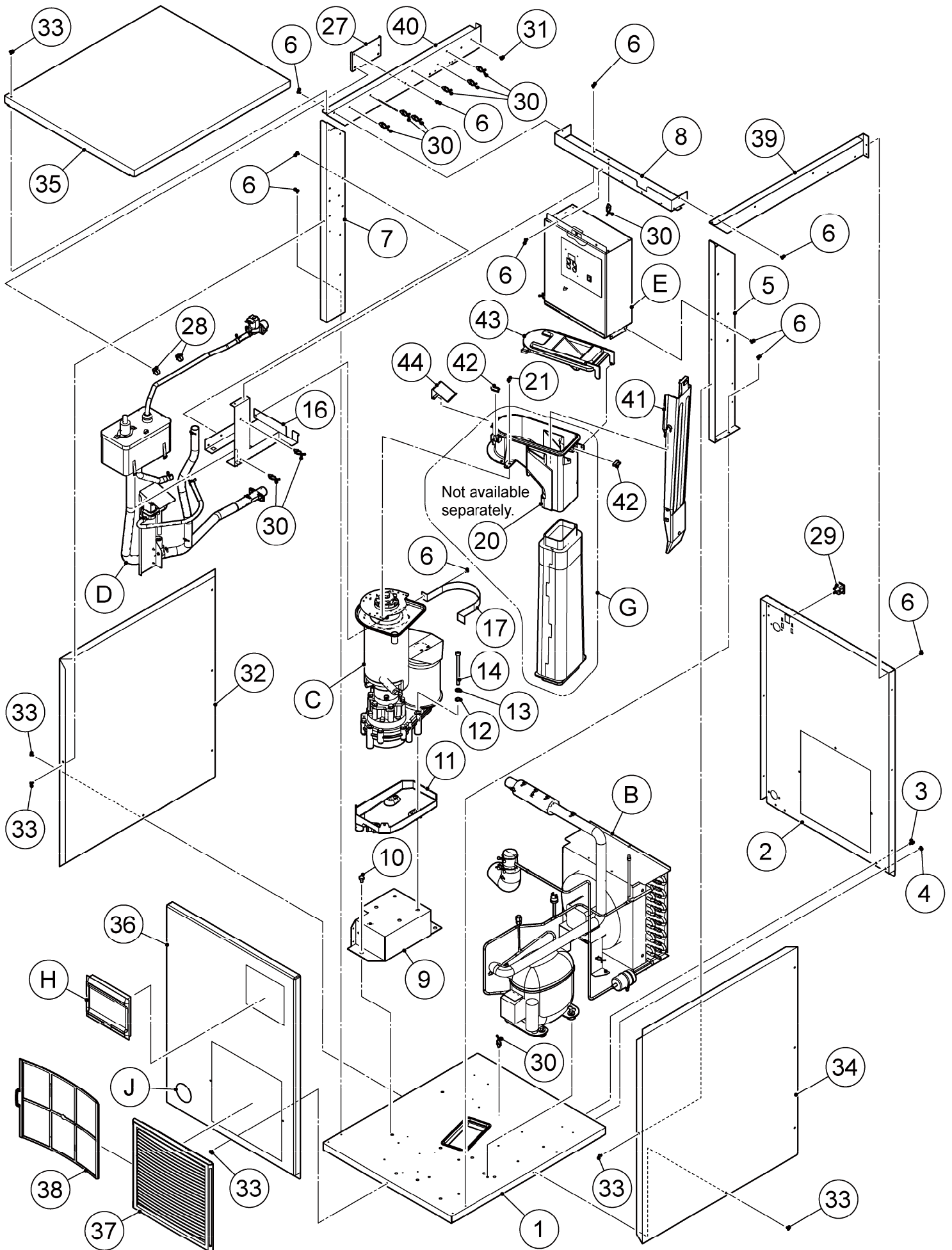


Special treatment (0 - 9)
 Material *1
 Nominal diameter (mm)
 Description *2
 Fastener

*2 Description

- First letter
- S: Machine screw
- T: Tapping screw
- M: Wood screw
- B: Bolt
- W: Washer
- N: Nut

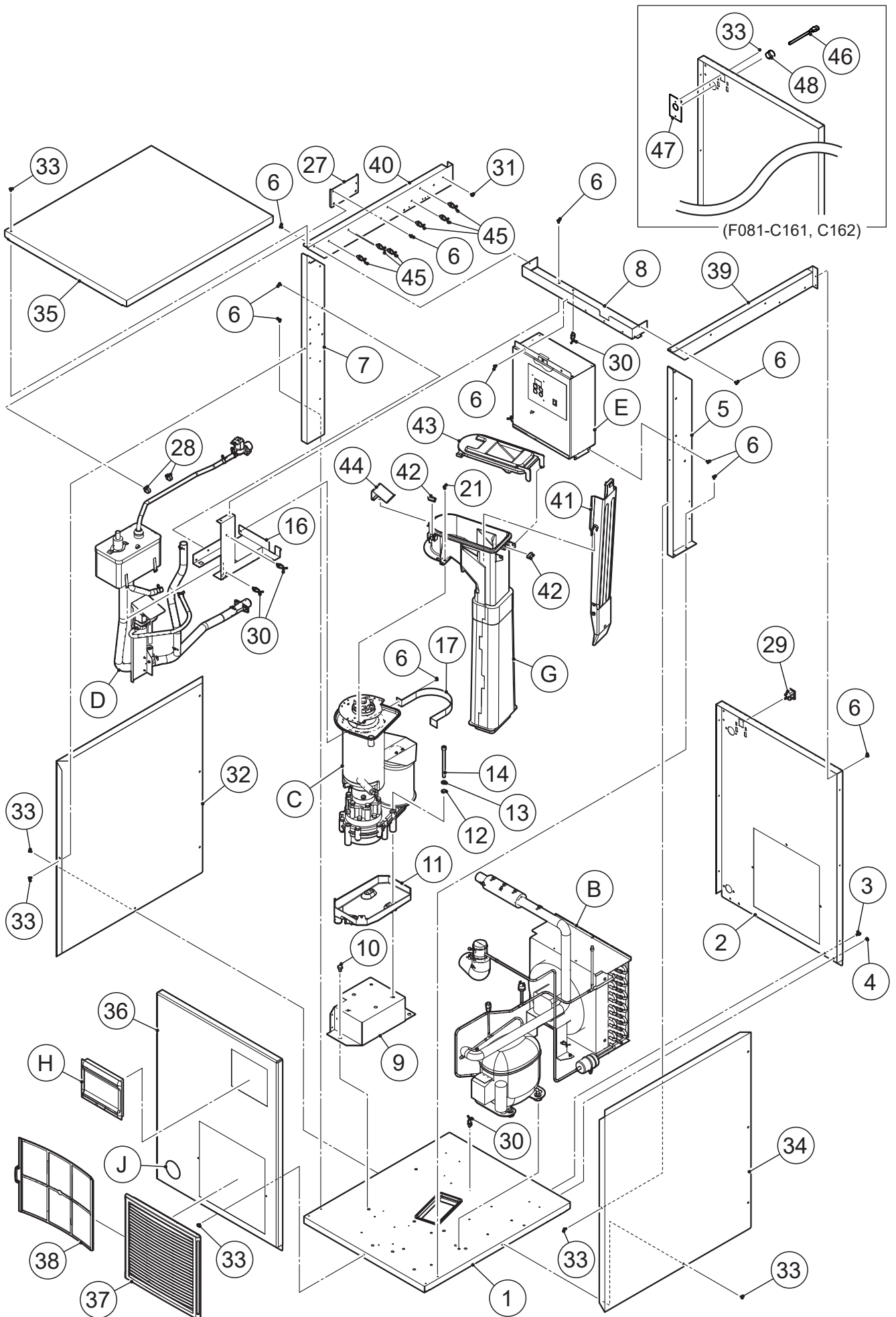




FM-300AKE(-SB)
 FM-300AKE-N(-SB)

A. ICE FLAKER ASSY

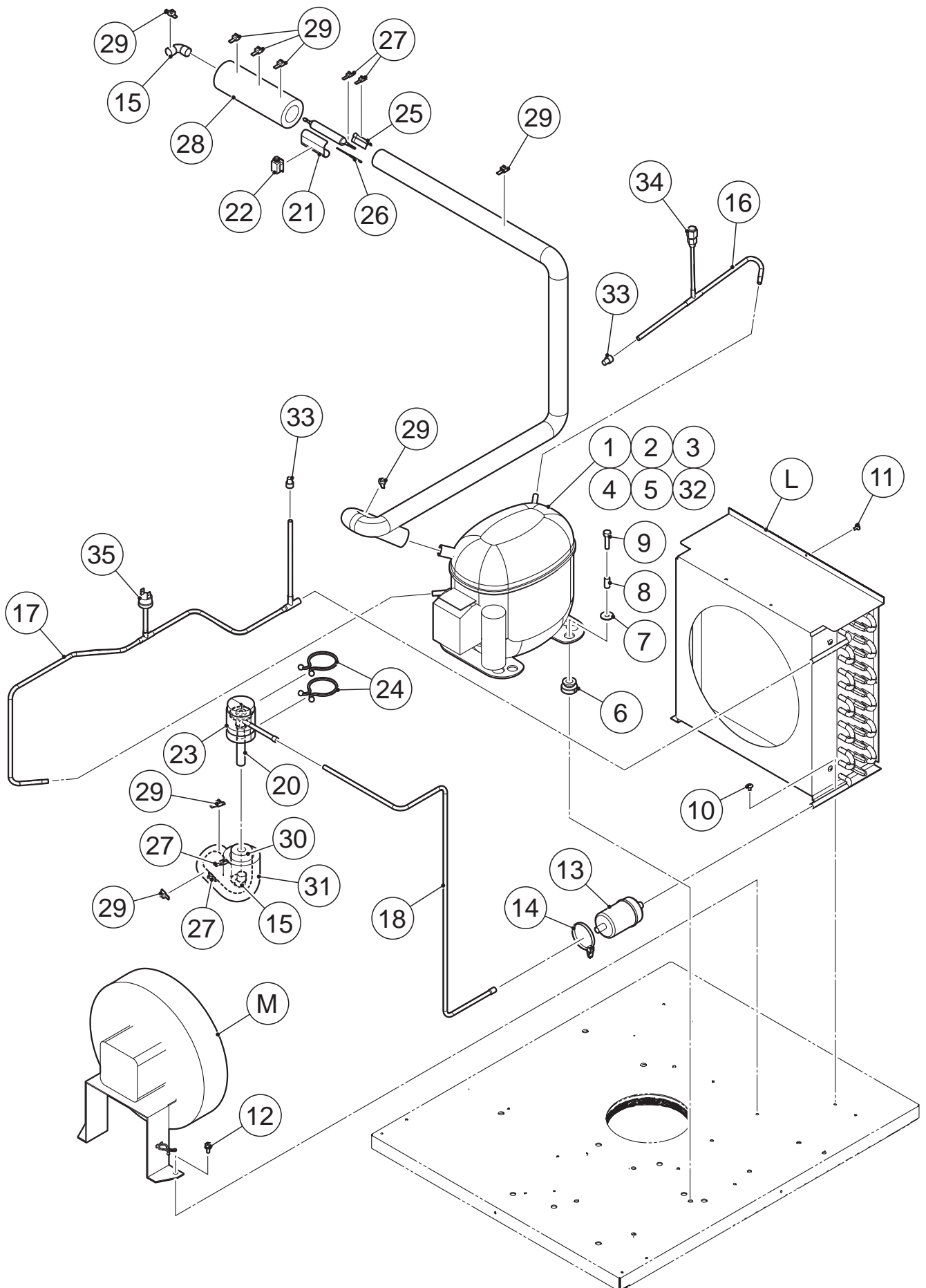
(E-2) and later



MODEL: FM-300AKE (-SB)		TITLE: A. ICE FLAKER ASSY						
FM-300AKE-N (-SB)								
INDEX NO.	DESCRIPTION	MATERIAL OR MODEL NUMBER	PART NUMBER	REQ'D NUMBER				
				B-1 D-0	D-1 E-1	E-2 H-0	H-1 and later	
B	REFRIGERATION CIRCUIT		121823A01	1	-	-	-	
			122465A01	-	1	1	1	
		60Hz F081-C130, F081-C131	122278A01	1	-	-	-	
			122619A01	-	1	1	1	
C	ICE MAKING UNIT		261985A01	1	-	-	-	
			264097A01	-	1	1	1	
		NUGGET F081-C106, F081-C131, F081-C171	261985A03	1	-	-	-	
		NUGGET, SUS304 F081-C107	264097A07	-	1	1	1	
				-	1	1	1	
D	WATER CIRCUIT		121788A01	1	-	-	-	
			122466A01	-	1	1	1	
		F081-C170,F081-C171	122466A02	-	-	-	1	
		F080-C161, F080-C162	122466001	-	-	-	1	
E	CONTROL BOX ASSY		262070A01	1	1	1	1	
			F080-C161, F080-C162	262070A03	-	-	-	1
F	BAND ASSY		S-9165	1	-	-	-	
G	CHUTE ASSY		113006A01	1	-	-	-	
			Integrated with 20.SPOUT - 70 Not available separately. Order G.SPOUT ASSY - CHUTE 70 (268065A02)	-	1	-	-	
	SPOUT ASSY - CHUTE 70		268065A02	-	-	1	1	
H	WINDW PANEL ASSY		348243A03	1	1	1	1	
J	LABEL LOCATION		262072A01	1	1	1	1	
			F080-C161	262072015	-	-	-	1
			F080-C162	262072016	-	-	-	1
M	ACCESSORIES		A02524-01	1	1	1	1	
1	CHASSIS		262062G01	1	-	-	-	
			264136G01	-	1	1	1	
		SUS304 F081-C101, F081-C107, F081-C170, F081-C171, F081-C130, F081-C131, F081-C161, F081-C162	266080G01	-	1	1	1	

MODEL: FM-300AKE (-SB)		TITLE: A. ICE FLAKER ASSY					
FM-300AKE-N (-SB)							
INDEX NO.	DESCRIPTION	MATERIAL OR MODEL NUMBER	PART NUMBER	REQ'D NUMBER			
				B-1 D-0	D-1 E-1	E-2 H-0	H-1 and later
2	REAR PANEL		121822M01	1	1	1	1
3	HEX HEAD BOLT (SPRING WASHER AND FLAT WASHER)		FBK0512S0	2	2	2	2
4	T2 TRUSS HEAD SCREW		FT20408F0	2	2	2	2
5	SIDE FRAME (R1)		264212M01	1	1	1	1
6	TRUSS HEAD MACHINE SCREW		FST0408F0	23	23	23	23
7	SIDE FRAME (L1)		264214M01	1	1	1	1
8	FRONT FRAME		261984M01	1	1	1	1
9	BRACKET - GEAR MOTOR		373520G01	1	-	-	-
			374371G01	-	1	1	1
10	HEX HEAD BOLT		FBH0816S0	3	3	3	3
11	DRAIN PAN		261640P01	1	1	1	1
12	SEAL WASHER		458299-01	3	3	3	3
13	SPRING WASHER		FWSP08S0	3	3	3	3
14	HEXAGON SOCKET HEAD CAP SCREW		461285-01	3	3	3	3
15	VINYL CAP		451272-01	3	-	-	-
16	BRACKET-RESERVOIR		261986M01	1	-	-	-
			264139M01	-	1	1	1
17	BAND		475195M01	1	1	1	1
18	RING		432661-02	1	-	-	-
19	O-RING		7616-G070	1	-	-	-
20	SPOUT		104797-01	1	-	-	-
	SPOUT - 70	Integrated with CHUTE Not available separately. Order SPOUT - CHUTE 70 (268064G02)		-	1	-	-
21	HEX HEAD BOLT (SPRING WASHER AND FLAT WASHER)		FBK0412S0	3	3	3	3
22	PACKING		454256-01	1	-	-	-
23	BAND (B)		459995G01	1	-	-	-
24	FLANGE NUT		FNHF06S0	3	-	-	-
25	NUT		FNH106F0	5	-	-	-
26	DRIP GUIDE		350725-01	1	-	-	-
27	BRACKET-WATER SUPPLY		476650M01	1	1	1	1
28	CLAMP		428644-03	2	2	2	2
29	CONNECTOR		P00245-02	1	1	1	1

MODEL: FM-300AKE (-SB)		TITLE: A. ICE FLAKER ASSY					
FM-300AKE-N (-SB)							
INDEX NO.	DESCRIPTION	MATERIAL OR MODEL NUMBER	PART NUMBER	REQ'D NUMBER			
				B-1 D-0	D-1 E-1	E-2 H-0	H-1 and later
30	CLAMP		P05216-01	10	10	4	4
31	PAN HEAD SCREW SW		FSK0408S0	1	1	1	1
32	SIDE PANEL (L)		261989M01	1	1	1	1
33	TRUSS HEAD SCREW		FST0408S0	12	12	12	12
		KOREA ONLY		-	-	-	14
34	SIDE PANEL (R)		262071M01	1	1	1	1
35	TOP PANEL		261991M01	1	1	1	1
36	FRONT PANEL (A)		122243G01	1	1	1	1
37	LOUVER		121931P01	1	1	1	1
38	AIR FILTER		262259G01	1	1	1	1
39	SIDE FRAME (R2)		264213M01	1	1	1	1
40	SIDE FRAME (L2)		264215M01	1	1	1	1
41	ACTUATOR		382184G02	-	1	1	1
		NUGGET F081-C106, F081-C107 F081-C131, F081-C171	382184G01	-	1	1	1
42	REED SWITCH		P02940-01	-	2	2	2
43	SPOUT COVER - 70		263887G01	-	1	1	1
44	SPRING - SPOUT		478013M01	-	1	1	1
45	CLAMP		P04381-01	-	-	6	6
46	POWER SUPPLY CORD	KOREA ONLY	P04435-01	-	-	-	1
47	BRACKET - POWER CORD	KOREA ONLY	4E0005M01	-	-	-	1
48	BUSHING	KOREA ONLY	420472-02	-	-	-	1



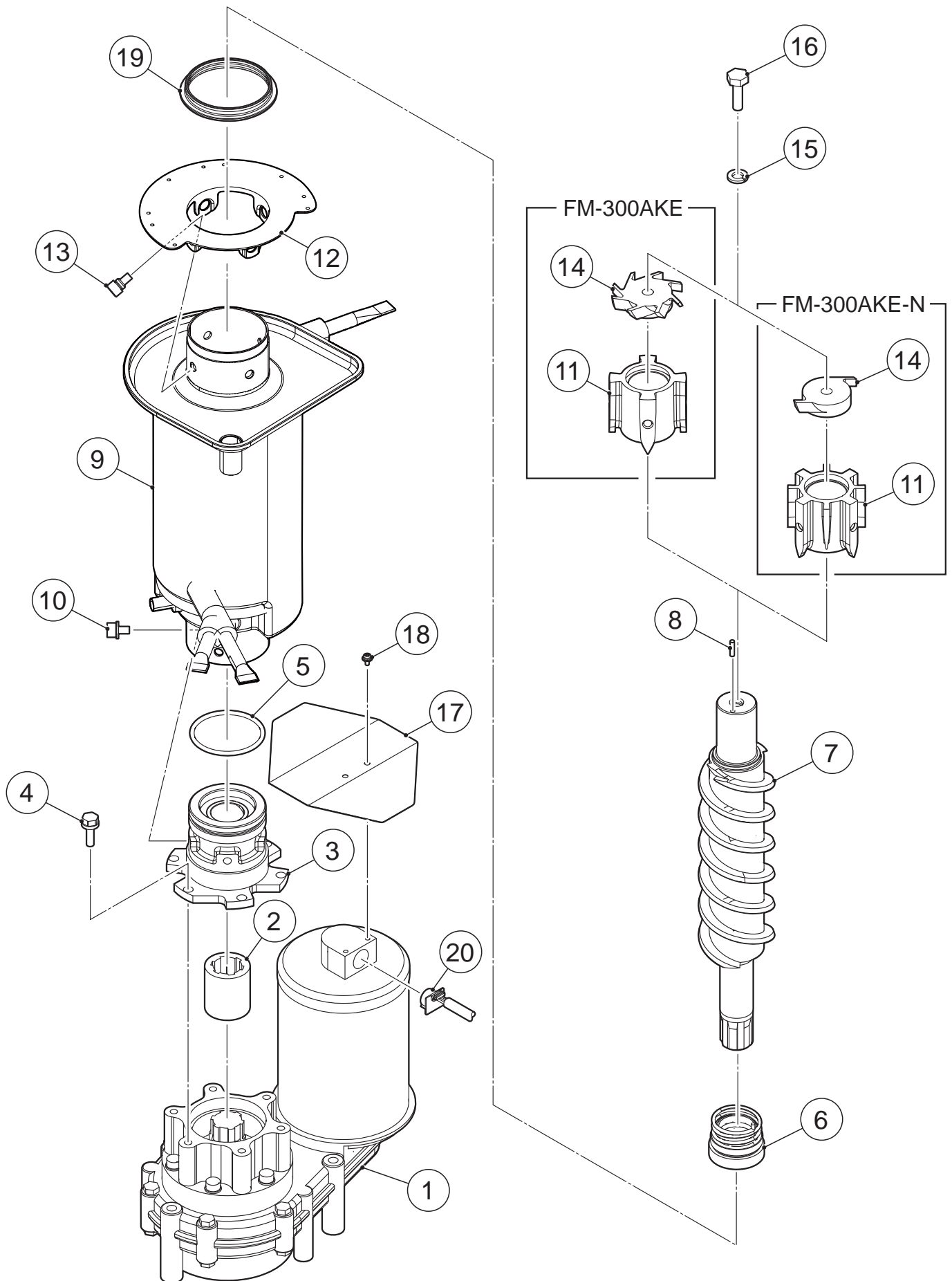
MODEL: FM-300AKE (-SB)

TITLE: B. REFRIGERATION CIRCUIT

MODEL: FM-300AKE-N (-SB)

INDEX NO.	DESCRIPTION	MATERIAL OR MODEL NUMBER	PART NUMBER	REQ'D NUMBER				
				B-1 D-0	D-1 E-1	E-2 H-0	H-1 and later	
K	CONDENSER ASSY		376368A01	1	1	1	1	
L	FAN MOTOR ASSY		376370A01	1	1	1	1	
1	COMPRESSOR		P01666-01	1	1	1	1	
		F081-C130, F081-C131	P02309-01	1	1	1	1	
2	STARTING RELAY		452237-01	1	1	1	1	
	STARTING DEVICE	F081-C130, F081-C131	P02347-01	1	1	1	1	
3	START CAPACITOR	F081, F081-C101 F081-C106, F081-C107	456350-01	1	1	1	1	
4	COVER		459924-01	1	1	1	1	
		F081-C130, F081-C131	P01179-01	1	1	1	1	
5	CORD RELIEF		452239-01	1	1	1	1	
6	GROMMET		450897-01	4	4	4	4	
7	WASHER CUSHION		450894-01	4	4	4	4	
8	BUSH CUSHION		450895-01	4	4	4	4	
9	BOLT		4A1459-01	4	4	4	4	
10	TRUSS HEAD SCREW		FST0408F0	2	2	2	2	
		F081-C130, F081-C131		4	4	4	4	
11	T2 TRUSS HEAD SCREW		FT20408F0	3	3	3	3	
12	HEX HEAD BOLT (SPRING WASHER AND FLAT WASHER)		FBK0512S0	2	2	2	2	
13	DRIER		462965-01	1	1	1	1	
14	TIE		436156-02	1	1	1	1	
15	ELBOW		417395-03	2	2	2	2	
16	COPPER TUBE(B)-LOW SIDE		463016G01	1	1	1	1	
17	COPPER TUBE(A) - H		262068G01	1	1	1	1	
18	COPPER TUBE(B) - L		376372M01	1	-	-	-	
	COPPER TUBE(B) - H		377784M01	-	1	1	1	
19	COPPER TUBE(A) - L		262069G01	1	-	-	-	
	COPPER TUBE - L		264162G01	-	1	1	1	
20	EXPANSION VALVE		453868-01	1	1	1	1	
21	HOLDER - EXP. VALVE 1/2		3A0112-01	1	1	1	1	
22	CLAMP		443461-01	1	1	1	1	
23	VALVE COVER		3Y3196P01	1	1	1	1	
24	CLAMP		P00752-01	2	2	2	2	

MODEL: FM-300AKE (-SB)		TITLE: B. REFRIGERATION CIRCUIT						
MODEL: FM-300AKE-N (-SB)								
INDEX NO.	DESCRIPTION	MATERIAL OR MODEL NUMBER	PART NUMBER	REQ'D NUMBER				
				B-1 D-0	D-1 E-1	E-2 H-0	H-1 and later	
25	HOLDER - THERMISTOR		427430-01	1	-	-	-	
			458132-01	-	1	1	1	
26	THERMISTOR ASSY		475407G01	1	1	1	1	
27	TIE	CV-150	7920-0003	4	3	3	3	
28	Insulation Tube		H74262B15	1	1	1	1	
29	NYLON TIE	CV-200	7920-0010	8	8	8	8	
30	INSULATION TUBE		H71333B35	1	1	1	1	
31	Insulation Tube		H73858B28	1	1	1	1	
32	NEOBELT PC		446470-01	2	2	2	2	
		F081-C130, F081-C131			1	1	1	
33	LOCKRING STOPPER		P01677-01	2	2	2	2	
34	ACCESS VALVE	COPPER TUBE(B)- LOW SIDE 463016G01	455119-01	1	1	1	1	
35	PRESSURE SWITCH	COPPER TUBE(A) - H 262068G01	459864-03	1	1	1	1	

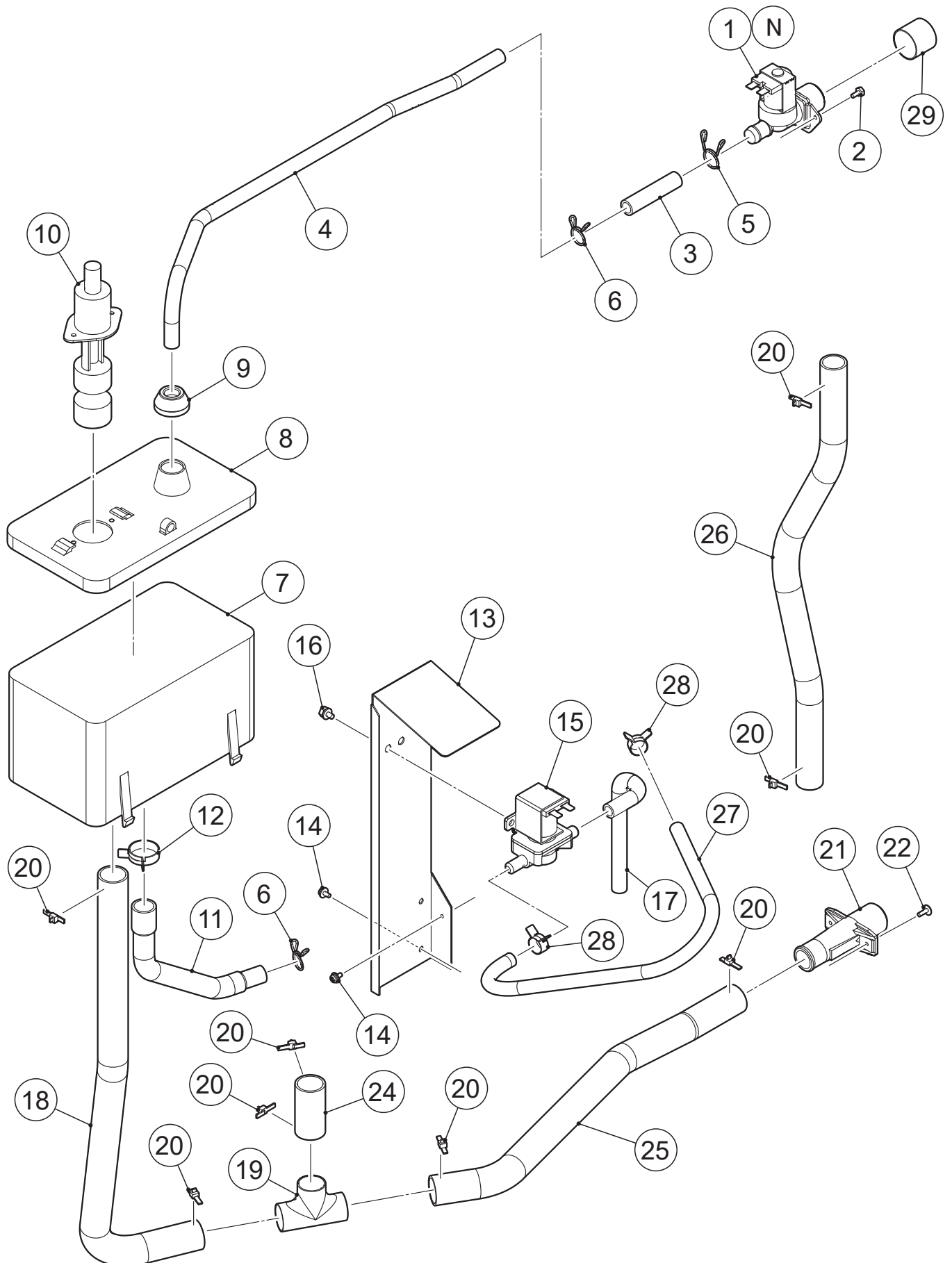


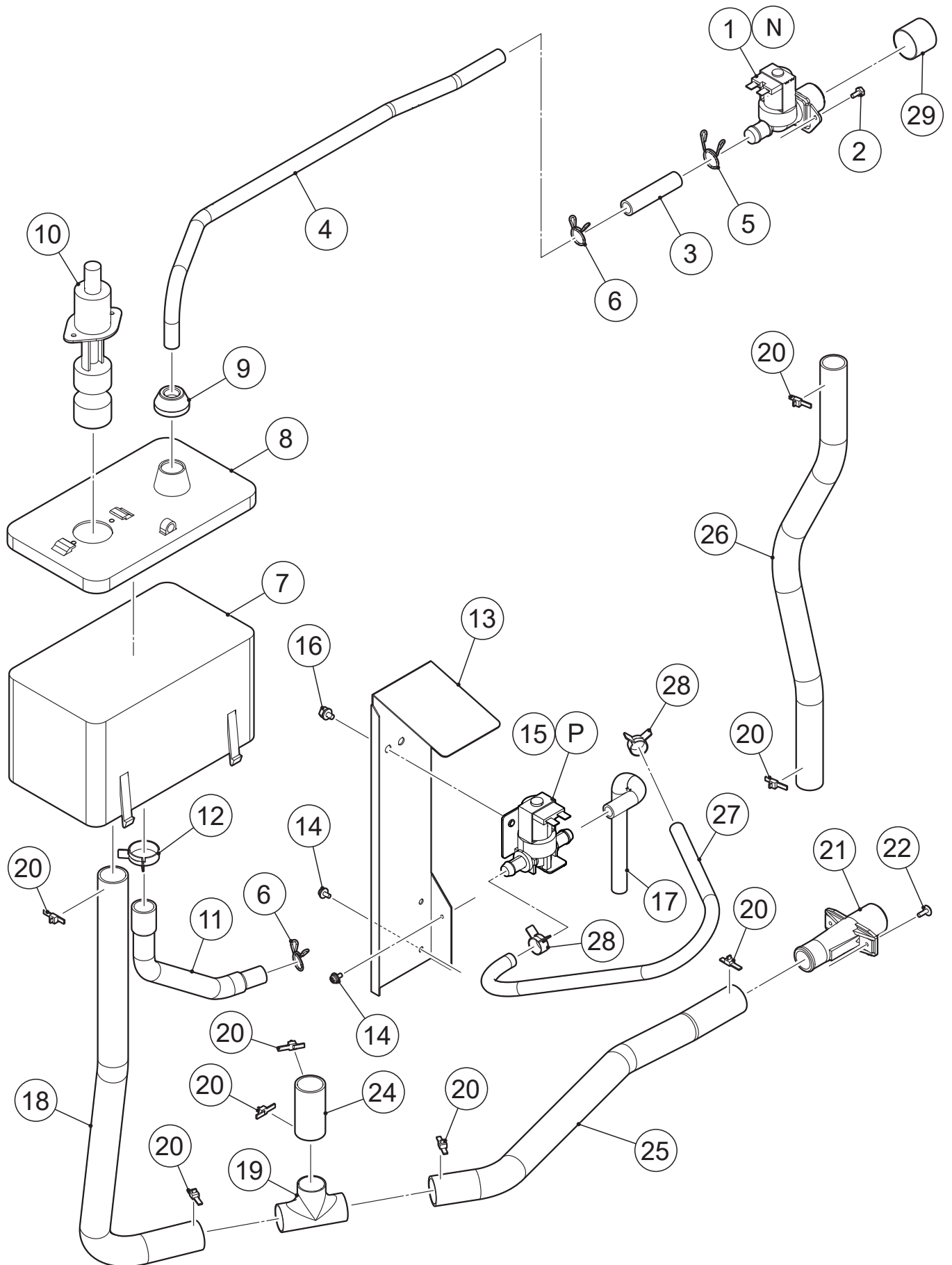
MODEL: FM-300AKE (-SB)

TITLE: C. ICE MAKING UNIT

FM-300AKE-N (-SE)

INDEX NO.	DESCRIPTION	MATERIAL OR MODEL NUMBER	PART NUMBER	REQ'D NUMBER						
				B-1 D-0	D-1 E-1	E-2 G-0	H-1	H-2 H-3	H-4 L-1	L-2 and later
1	GEAR MOTOR		466223-01	1	1	1	1	1	1	-
			P05525-01	-	-	-	-	-	-	1
2	COUPLING		414137-01	1	1	1	1	1	1	1
3	BEARING (LOWER)		206657G02	1	1	1	1	1	1	1
4	HEX.HEAD BOLT W/WASHER (SW)		461888-01	6	6	6	6	6	6	6
5	O-RING		7616-G065	1	1	1	1	1	1	1
6	MECHANICAL SEAL		432492-03	1	1	1	1	1	1	1
7	AUGER		120863G02	1	1	1	1	1	1	1
8	PIN		713S-0416	1	1	1	1	1	1	1
9	EVAPORATOR		258997G01	1	1	1	1	1	-	-
			275065G01	-	-	-	-	-	1	1
10	SCREW		P01719-01	4	4	4	4	4	4	4
11	EXTRUDING HEAD-70F		327097G04	1	1	1	1	-	-	-
			327097G07	-	-	-	-	1	1	1
	EXTRUDING HEAD-70N	F081-C106, F081-C107 F081-C131, F081-C171	216531G02	1	1	1	-	-	-	-
			216531G05	-	-	-	1	1	1	1
12	FLANGE-70		476246G02	1	-	-	-	-	-	-
			372207M01	-	1	1	1	1	-	-
			387431M01	-	-	-	-	-	1	1
13	SEAL BOLT - M8		P01768-01	4	4	4	4	4	4	4
14	CUTTER	F081-C106, F081-C107 F081-C131, F081-	317071-02	1	1	1	1	1	1	1
			327145-01	1	1	1	1	1	1	1
15	SPRING WASHER		FWSP10S0	1	1	1	1	1	1	1
16	SCREW-BOLT		458101-01	1	1	1	1	1	1	1
17	COVER-GEAR MOTOR		466374-01	1	1	1	1	1	1	1
18	PAN HEAD SCREW SW		FBK0410S0	2	2	2	2	2	2	2
19	PACKING - SPOUT		473494R01	-	1	1	1	1	1	1
20	ROTATION SENSOR	GEAR MOTOR ACCESSORY	459861-03	1	1	1	1	1	1	1





MODEL: FM-300AKE (-SB)

TITLE: D. WATER CIRCUIT

FM-300AKE-N (-SB)

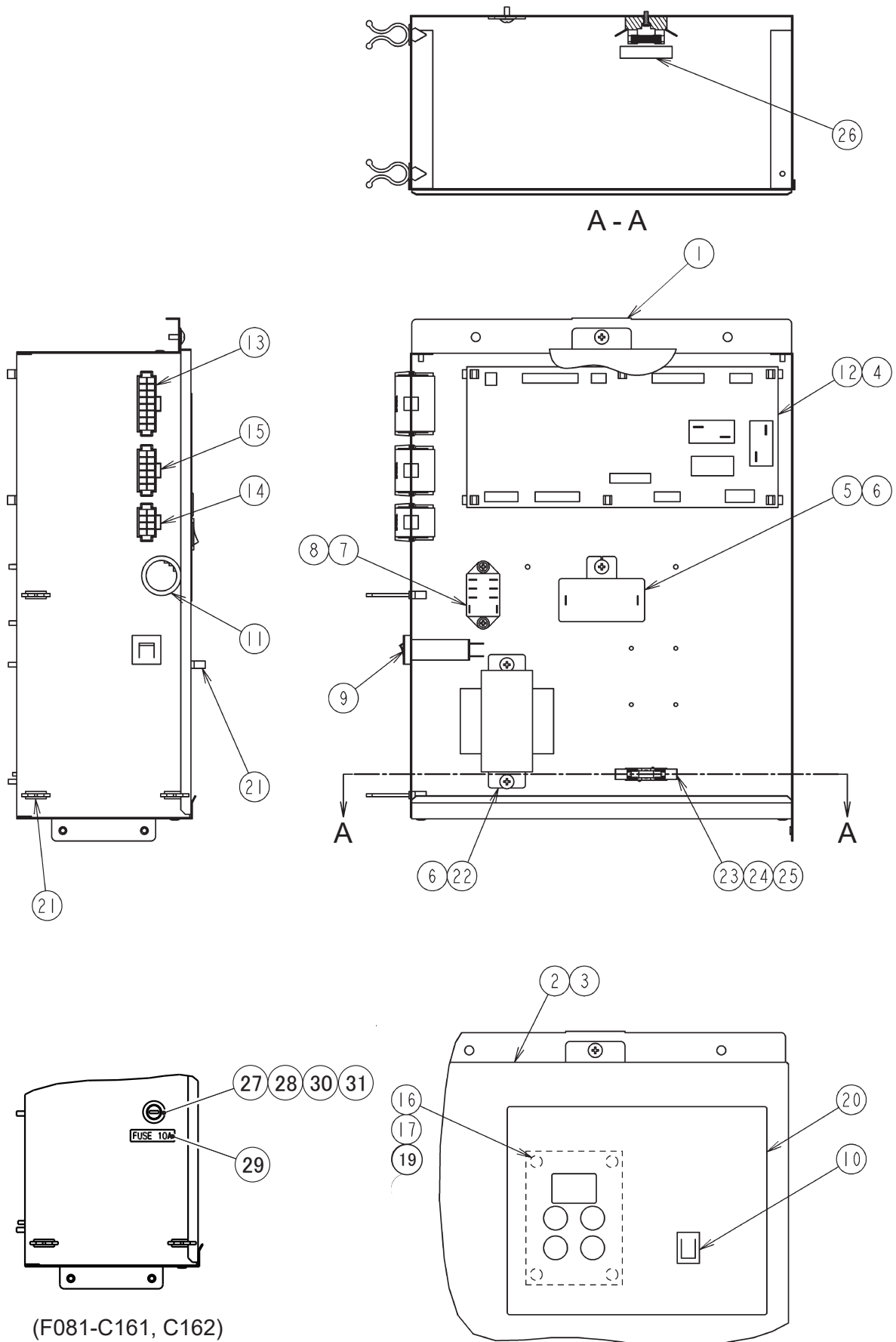
INDEX NO.	DESCRIPTION	MATERIAL OR MODEL NUMBER	PART NUMBER	REQ'D NUMBER				
				B-1 D-0	D-1 E-1	E-2 H-0	H-1 K-0	K-1 and later
N	WATER VALVE ASSY	HS ONLY	484534A01	1	1	1	1	1
P	WATER VALVE ASSY	except HS, KOREA	486323A01	-	-	-	-	1
1	WATER VALVE	except HS	P05353-01	1	1	1	1	1
		KOREA ONLY	452993-01	-	-	-	-	1
2	HEX HEAD BOLT		FBF0408S0	2	2	2	2	2
3	SILICONE HOSE		4Y6912R06	1	1	1	1	1
4	PIPE-WATER SUPPLY		376329M01	1	1	1	1	1
5	HOSE CLAMP		435934-03	1	1	1	1	1
6	HOSE CLAMP		435934-02	2	2	2	2	2
7	RESERVOIR		232626-01	1	1	1	1	1
8	COVER - RESERVOIR		232627-01	1	1	1	1	1
9	COVER - RESERVOIR INLET		415094-01	1	1	1	1	1
10	FLOAT SWITCH		458279-01	1	1	1	1	1
11	HOSE		3E0014R01	1	1	1	1	1
12	CLIP BAND		423866-08	1	1	1	1	1
13	BRACKET - VALVE		373530M01	1	1	1	1	1
14	PAN HEAD MACHINE SCREW (SPRING WASHER AND FLAT WASHER)		FSK0408F0	3	3	3	3	3
15	WATER VALVE		468655-01	1	1	1	1	-
		HS, KOREA ONLY		1	1	1	1	1
16	HEX HEAD BOLT (SPRING WASHER AND FLAT WASHER)		FBK0510S0	2	2	2	2	2
17	DRAIN HOSE (B)		459329-01	1	1	1	1	1
18	PVC Hose - FSA		HD2226520	1	-	-	-	-
			HD2226580	-	1	1	1	1
19	TEE		417394-06	1	1	1	1	1
20	TIE		7920-0003	8	8	8	8	8
21	DRAIN PIPE		321035-01	1	1	1	1	1
22	TRUSS HEAD TAPPING SCREW T2		FT20410S0	2	2	2	2	2
24	PVC Hose - FSA		HD2226050	1	-	-	-	-
			HD2226045	-	1	1	1	1
25	PVC Hose - FSA		HD2226380	1	1	1	1	1

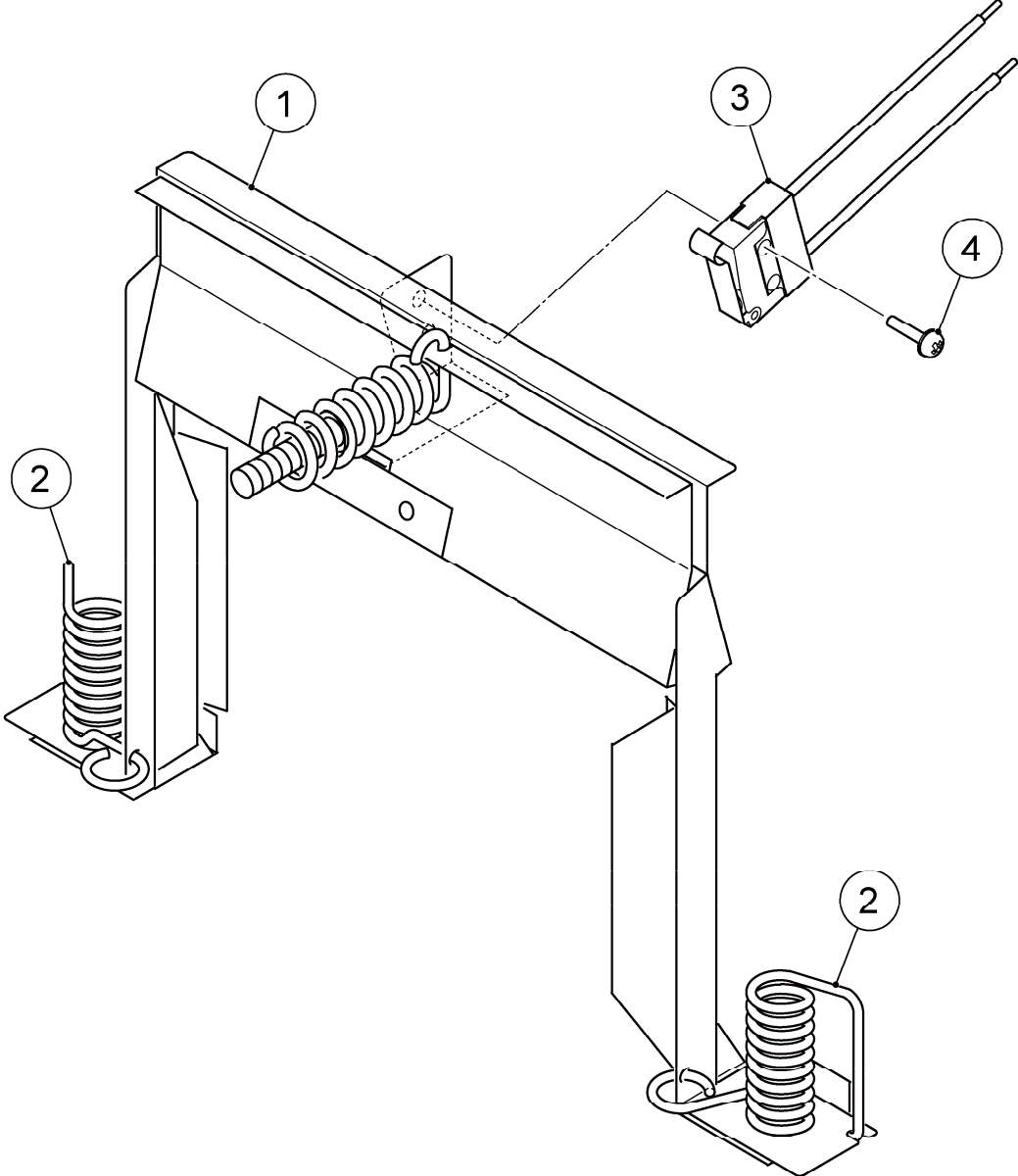
MODEL: **FM-300AKE (-SB)**

TITLE: **D. WATER CIRCUIT**

FM-300AKE-N (-SB)

INDEX NO.	DESCRIPTION	MATERIAL OR MODEL NUMBER	PART NUMBER	REQ'D NUMBER				
				B-1 D-0	D-1 E-1	E-2 H-0	H-1 K-0	K-1 and later
26	PVC Hose (Food Grade)		HD1922460	1	1	1	1	1
27	PVC Hose - FSA		HD0912450	1	1	1	1	1
28	CLAMP		423866-03	3	3	3	3	3
29	CAP		417323-01	1	1	1	1	1

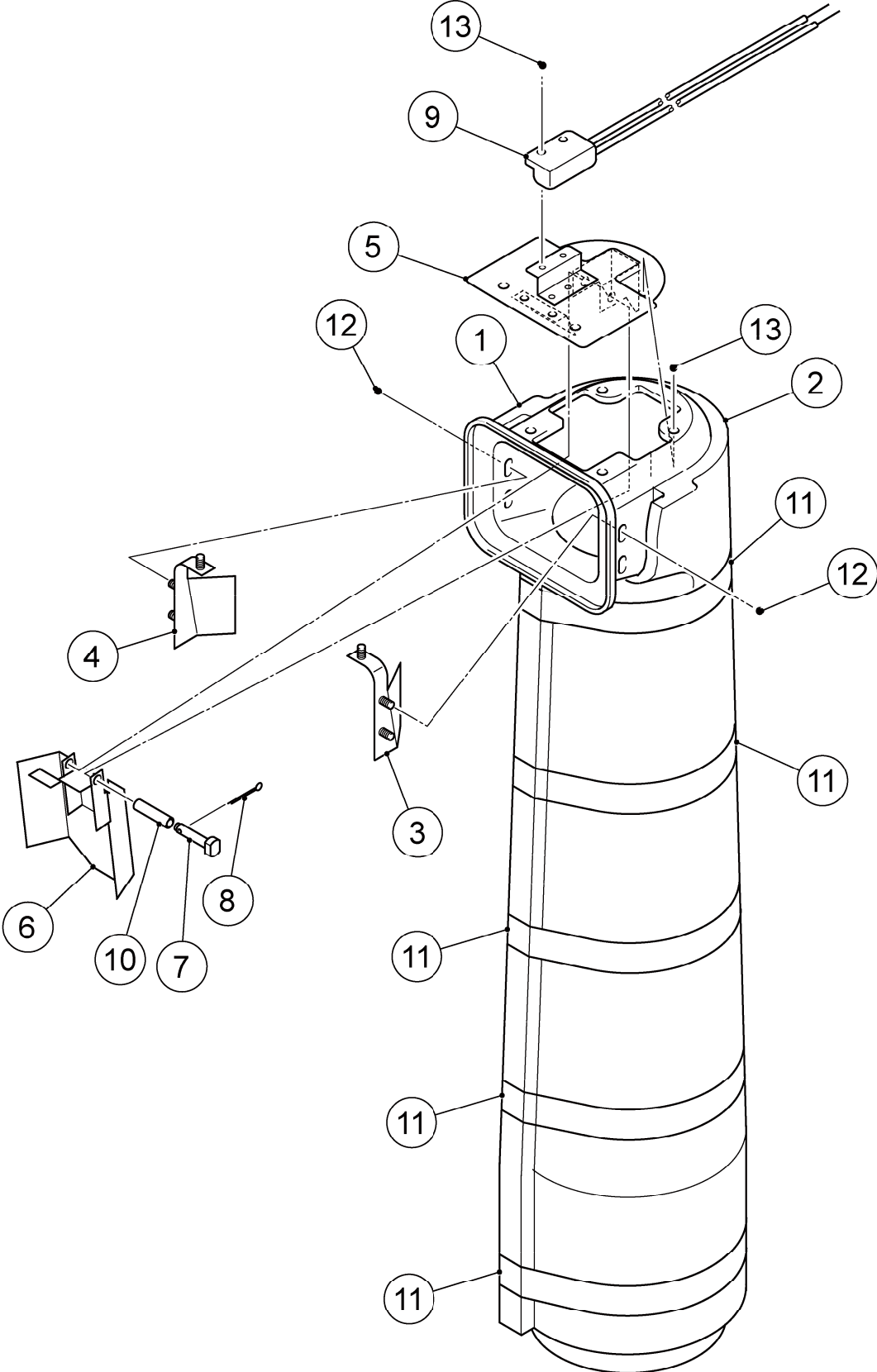


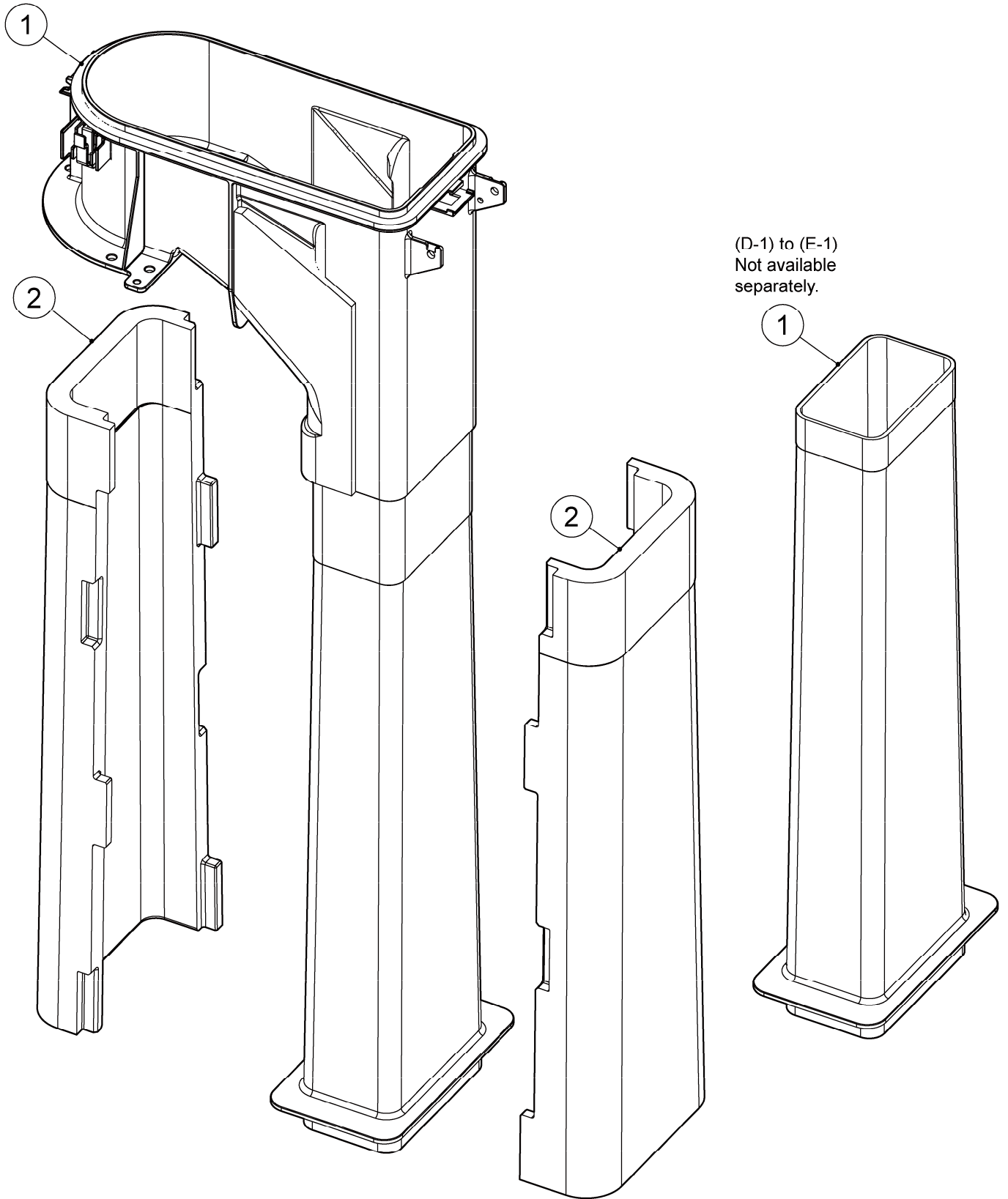


MODEL: FM-300AKE, FM-300AKI

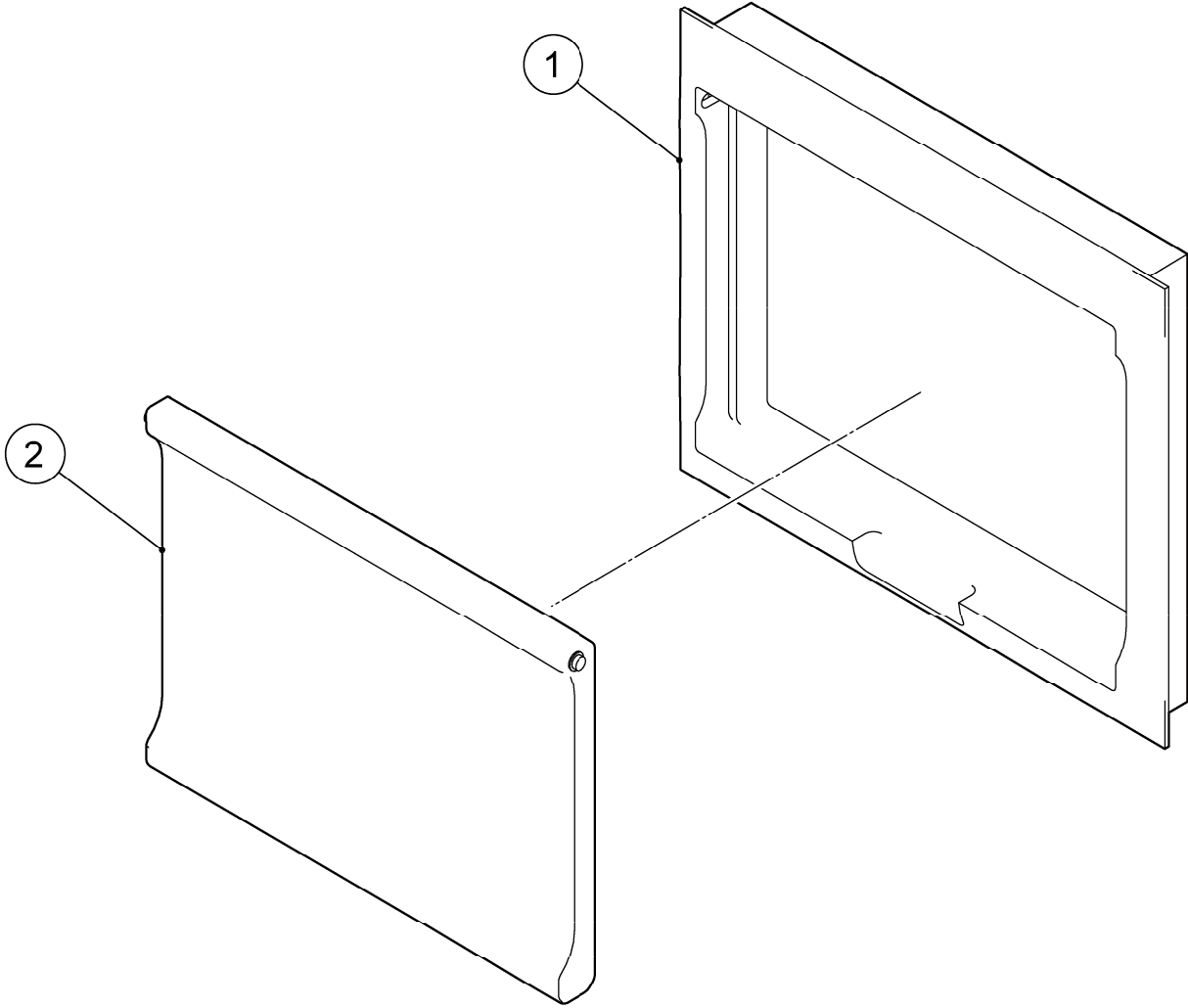
TITLE: F. BAND ASSY

INDEX NO.	DESCRIPTION	MATERIAL OR MODEL NUMBER	PART NUMBER	REQ'D NUMBER				
				B-1 D-0	D-1 E-1	E-2 H-0	H-1 and later	
1	BAND (A)		348305G01	1	1	1	1	
2	SPRING (A)		459997-01	2	2	2	2	
3	MICROSWITCH		P04658-02	1	1	1	1	
4	PAN HEAD MACHINE SCREW (SPRING WASHER AND FLAT WASHER)		470416-01	2	2	2	2	

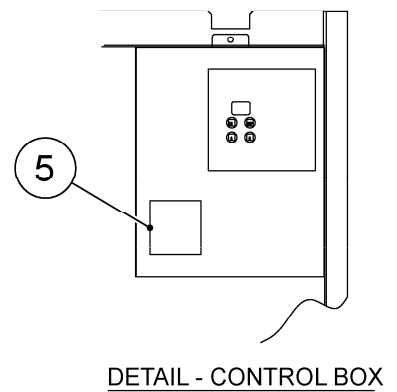
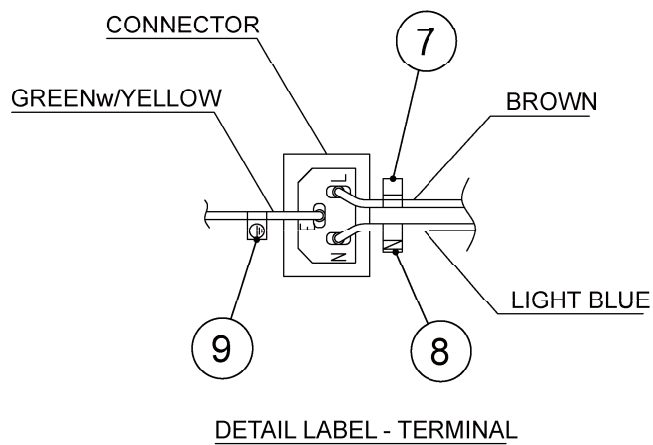
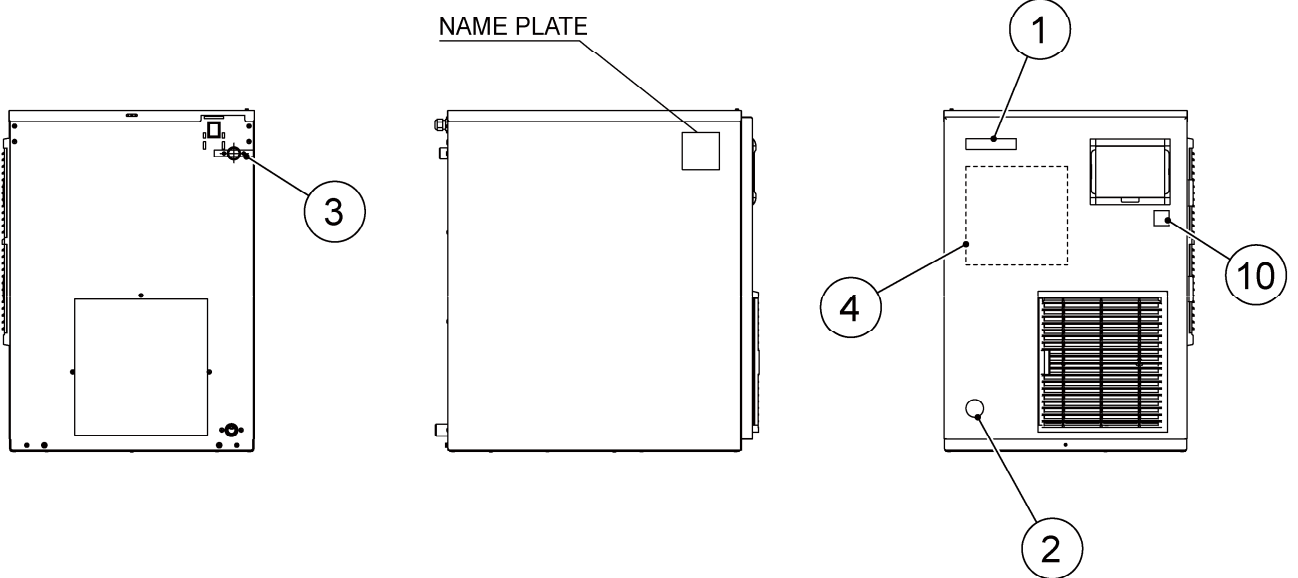
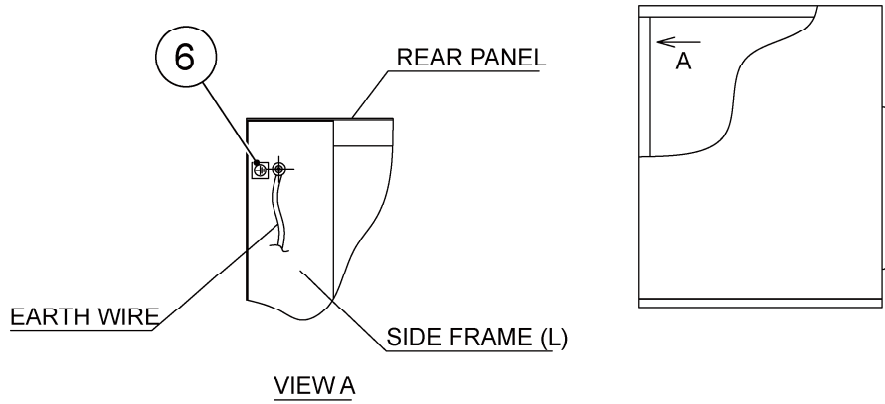


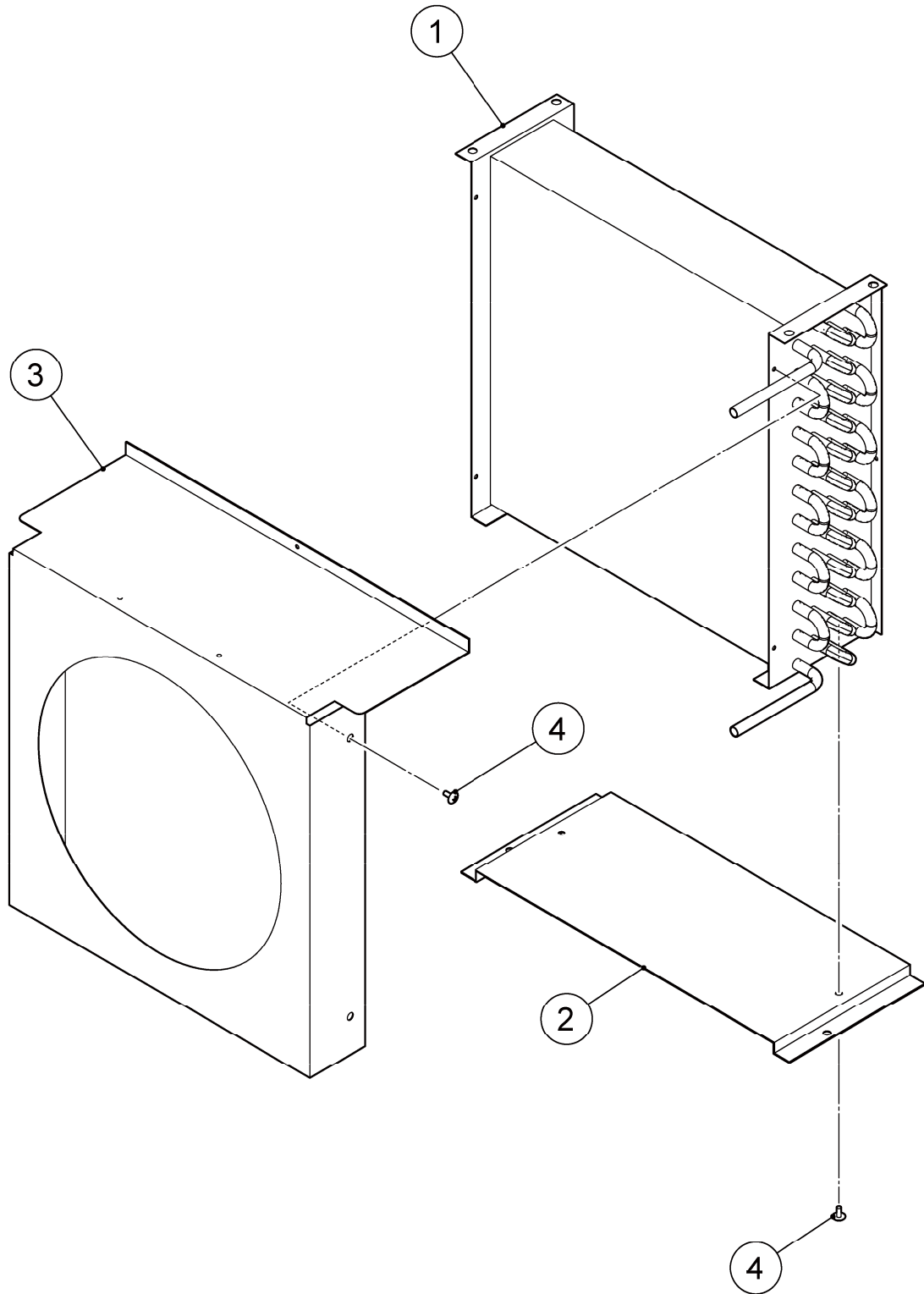


MODEL: FM-300AKE (-SB)		TITLE: G. CHUTE ASSY						
FM-300AKE-N (-SB)								
INDEX NO.	DESCRIPTION	MATERIAL OR MODEL NUMBER	PART NUMBER	REQ'D NUMBER				
				B-1 D-0	D-1 E-1	E-2 H-0	H-1 and later	
1	CHUTE		214823-01	1	-	-	-	
		Integrated with SPOUT - 70 Not available separately. Order SPOUT - CHUTE 70 (268064G02)		-	1	-	-	
	SPOUT - CHUTE 70		268064G02	-	-	1	1	
2	INSULATION-CHUTE		235310-01	1	-	-	-	
			263903P02	-	2	2	2	
3	BAFFLE - CHUTE (A)		325122G01	1	-	-	-	
4	BAFFLE - CHUTE (B)		325123G01	1	-	-	-	
5	BIN CONTROL		353918G01	1	-	-	-	
6	ACTUATOR		436848G05	1	-	-	-	
7	SHAFT		458813-01	1	-	-	-	
8	SPLIT PIN		711SP1612	1	-	-	-	
9	PROXIMITY SWITCH		4A2033-01	1	-	-	-	
10	TUBE		461623-01	1	-	-	-	
11	TAPE		113006Z01	5	-	-	-	
12	WING NUT		FNW204S0	6	-	-	-	
13	TRUSS HEAD SCREW		FST0406S0	4	-	-	-	

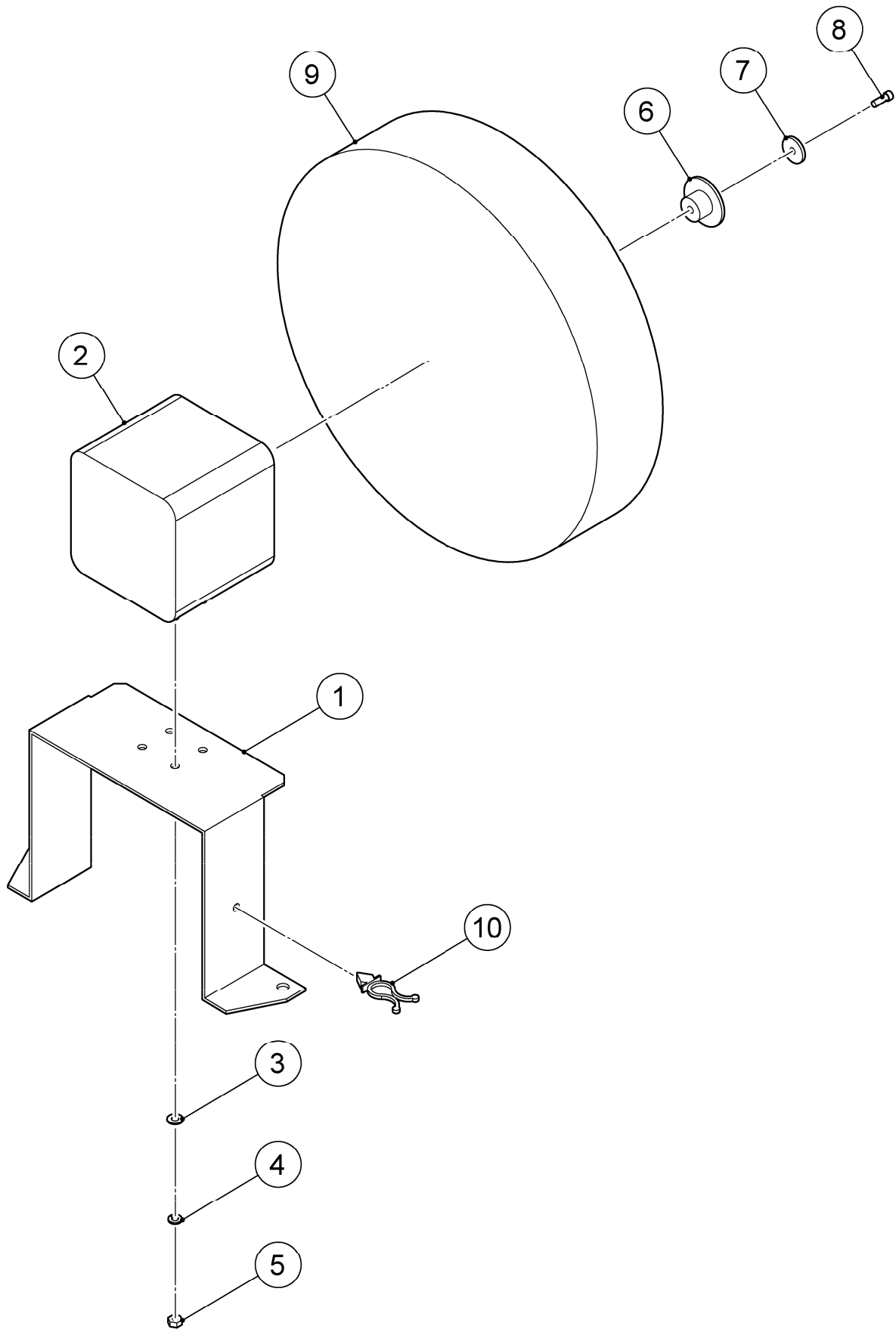


MODEL: FM-300AKE (-SB)		TITLE: H. WINDW PANEL ASSY						
FM-300AKE-N (-SB)								
INDEX NO.	DESCRIPTION	MATERIAL OR MODEL NUMBER	PART NUMBER	REQ'D NUMBER				
				B-1 D-0	D-1 E-1	E-2 H-0	H-1 and later	
1	WIND FRAME		232648-01	1	1	1	1	
2	WIND PANEL		232649-03	1	1	1	1	





MODEL: FM-300AKE (-SB)		TITLE: K. CONDENSER ASSY						
FM-300AKE-N (-SB)								
INDEX NO.	DESCRIPTION	MATERIAL OR MODEL NUMBER	PART NUMBER	REQ'D NUMBER				
				B-1 D-0	D-1 E-1	E-2 H-0	H-1 and later	
1	CONDENSER		P03383-01	1	1	1	1	
2	BRACKET - CONDENSER		476679M01	1	1	1	1	
3	SHROUD		262064M01	1	1	1	1	
4	T2 TRUSS HEAD SCREW		FT20408F0	6	6	6	6	



MODEL: FM-300AKE (-SB)

TITLE: L. FAN MOTOR ASSY

FM-300AKE-N (-SB)

INDEX NO.	DESCRIPTION	MATERIAL OR MODEL NUMBER	PART NUMBER	REQ'D NUMBER				
				B-1 D-0	D-1 E-1	E-2 H-0	H-1 and later	
1	BRACKET - FAN MOTOR		376371M01	1	1	1	1	
2	FAN MOTOR		P02528-01	1	1	1	1	
3	FLAT WASHER		FWPL04S0	4	4	4	4	
4	SPRING WASHER		FWSP04S0	4	4	4	4	
5	NUT		FNH104S0	4	4	4	4	
6	VIBRATION PAD		P02528F01	1	1	1	1	
7	WASHER/PAD		P02528F02	1	1	1	1	
8	BOLT		P02528F03	1	1	1	1	
9	FAN BLADE		P02529-01	1	1	1	1	
10	CLAMP		P05216-01	1	1	1	1	

