



---

SELF-CONTAINED FLAKER

**FM-60KE-HC**  
**CM-50KE-HC**

# PARTS LIST

[HE]

F161, F161-C103

L-0 JUL. 2021

F161-5198 (1221)

**Product Code      Spec**

**FM-60KE-HC**

<b>F161</b>	Standard
-------------	----------

**CM-50KE-HC**

<b>F161-C103</b>	Nugget type
------------------	-------------

## AUXILIARY CODE

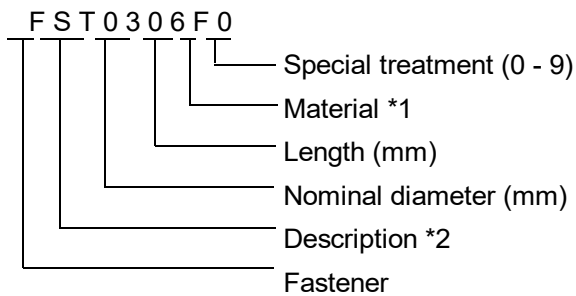
U - 1

The auxiliary code is the first two characters in the serial number. The first character indicates the production year. Years progress or regress in alphabetical order. The series of letters and skipped letters depend on UL listing, production, and model. See the auxiliary code(s) and corresponding year(s) on the front cover.

The second character indicates significant part changes within the same year. Base is "1" and this number advances for each change. If there is no significant part change at the turn of the year, this number starts from "0."

## FASTENER PART NUMBER

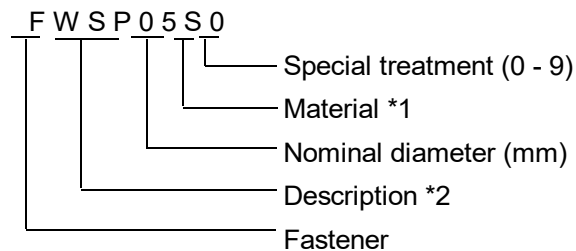
### SCREWS



\*1 Material

F: Steel  
S: Austenitic stainless steel  
M: Martensitic stainless steel  
B: Copper alloy  
P: Polycarbonate  
N: Polyamide  
V: PVC  
A: ABS  
X: Polyacetal  
L: Aluminum

### NUTS & WASHERS



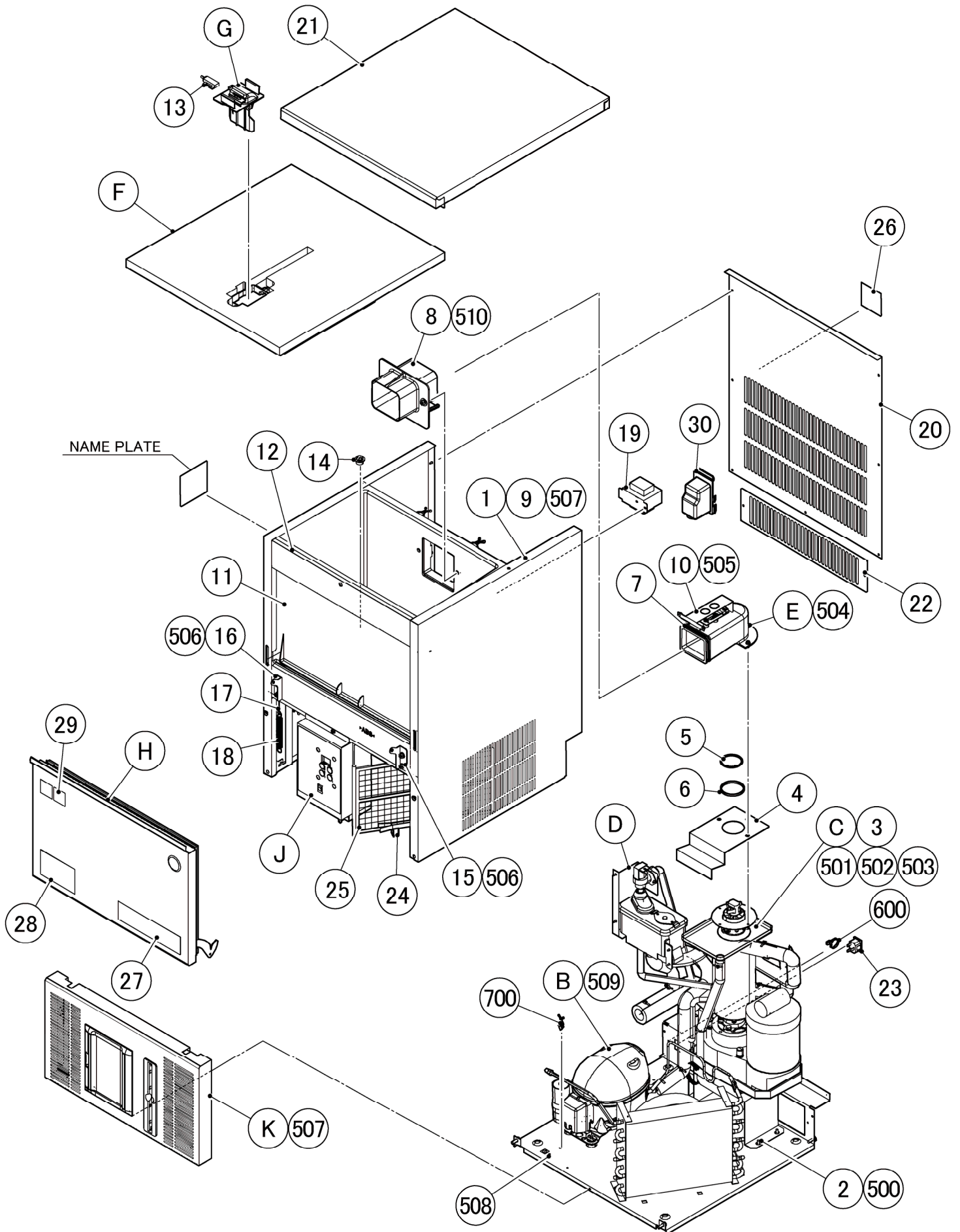
\*2 Description

First letter  
S: Machine screw  
T: Tapping screw  
M: Wood screw  
B: Bolt  
W: Washer  
N: Nut

## PART CALLOUTS

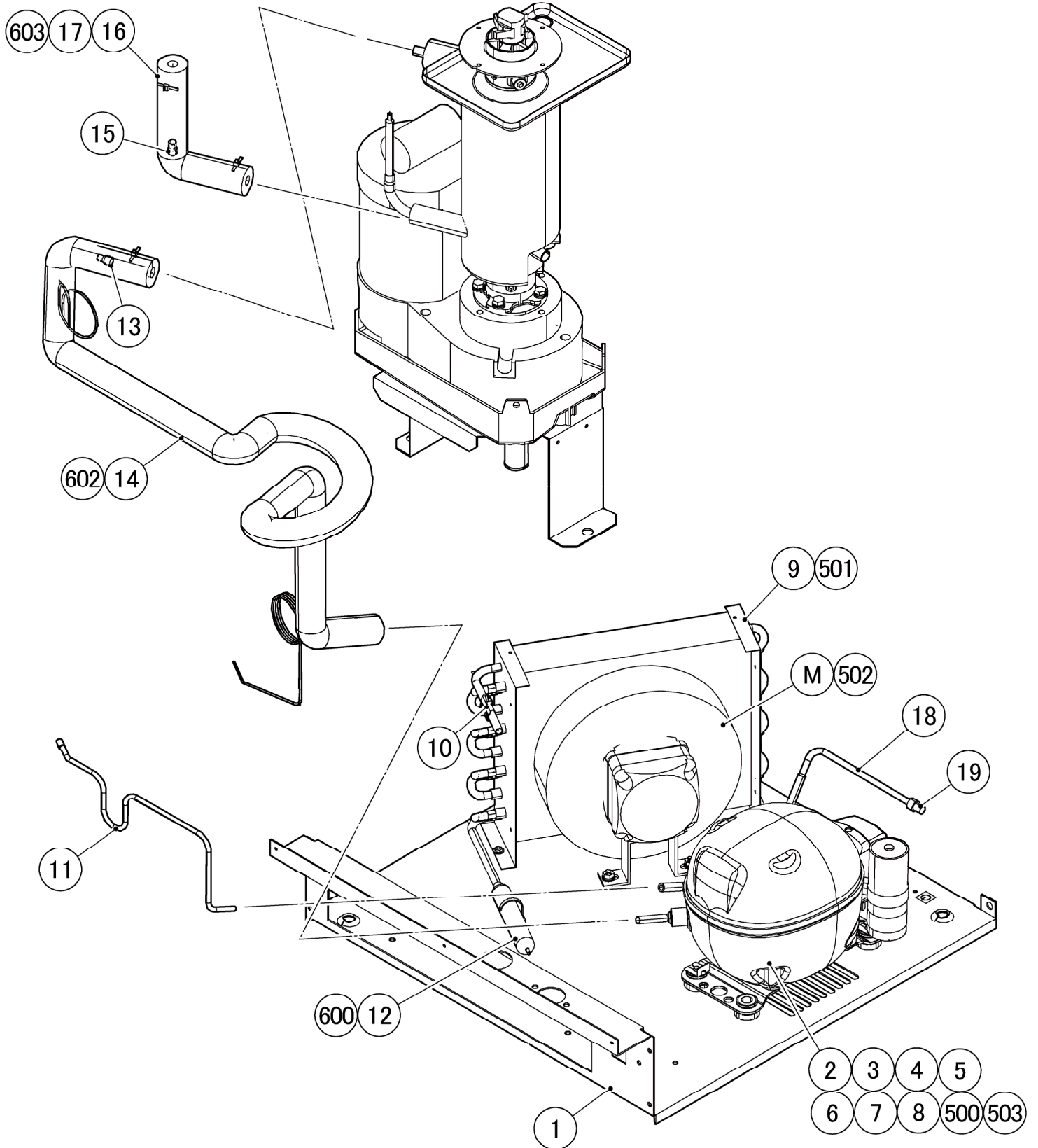
Note that three digit callouts indicate the following types of parts:

- \*500 Series - fasteners such as screws, bolts, nuts, washers, and collars
- \*600 Series - nylon ties
- \*700 Series - parts to secure or connect hoses and wires



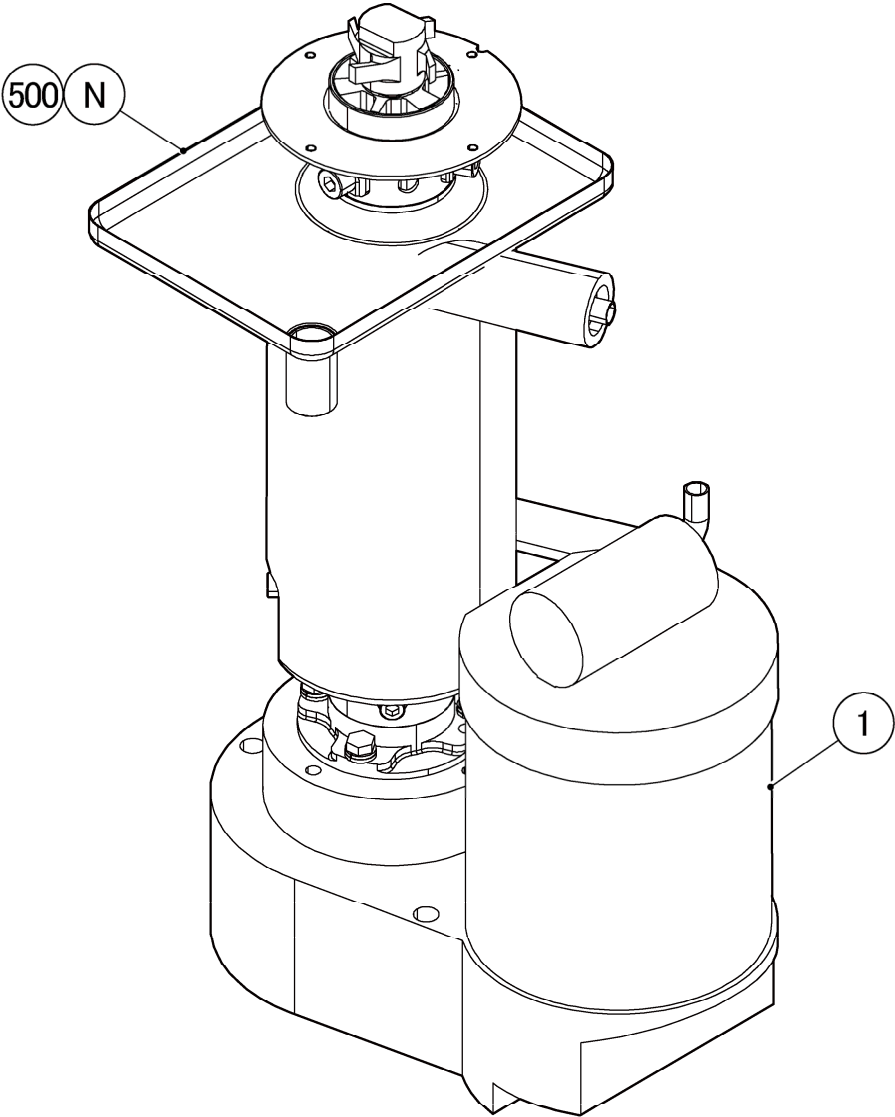
MODEL: <b>FM-60KE-HC</b> <b>CM-50KE-HC</b>					TITLE: <b>A. ICE FLAKER ASSY</b>				
INDEX NO.	DESCRIPTION	MATERIAL OR MODEL NUMBER	PART NUMBER	REQ'D NUMBER					
				L-0 and later					
B	REFRIGERATION CIRCUIT		1E0043A01	1					
C	ICE MAKING UNIT	F161	386905A01	1					
		F161-C103	386905002	1					
D	WATER CIRCUIT ASSY		1E0044A01	1					
E	SPOUT ASSY		358941A01	1					
F	UPPER PANEL		3E0021A01	1					
G	ACTUATOR ASSY		350301A01	1					
H	DOOR ASSY		3Y5614A01	1					
J	CONTROL BOX ASSY		2E0021A01	1					
K	FRONT PANEL ASSY		3E0040A01	1					
L	ACCESSORIES		A03960-01	1					
1	UNIT FRAME		1E0042G01	1					
2	BRACKET - GM		3E0020G01	1					
3	VINYL CAP		451272-01	3					
4	BRACKET-EVA		376026M01	1					
5	O-RING		7616-G045	1					
6	RING		432661-03	1					
7	PACKING (A) - SPOUT		427152-02	1					
8	SPOUT(B)		232654-02	1					
9	HARNESS		4E0028A01	1					
10	BRACKET - SPOUT		4E0025M01	1					
11	SLOPE		2H1349-01	1					
12	INSULATION - FRONT FRAME		4E0026P01	1					
13	REED SWITCH		453861-02	1					
14	DRAIN PIPE		466275-01	1					
15	HINGE (RIGHT)		4H2583-01	1					
16	HINGE (LEFT)		4H2584-01	1					
17	HOOK-SPRING		4Y9337M01	1					
18	SPRING		4Y9336M01	1					



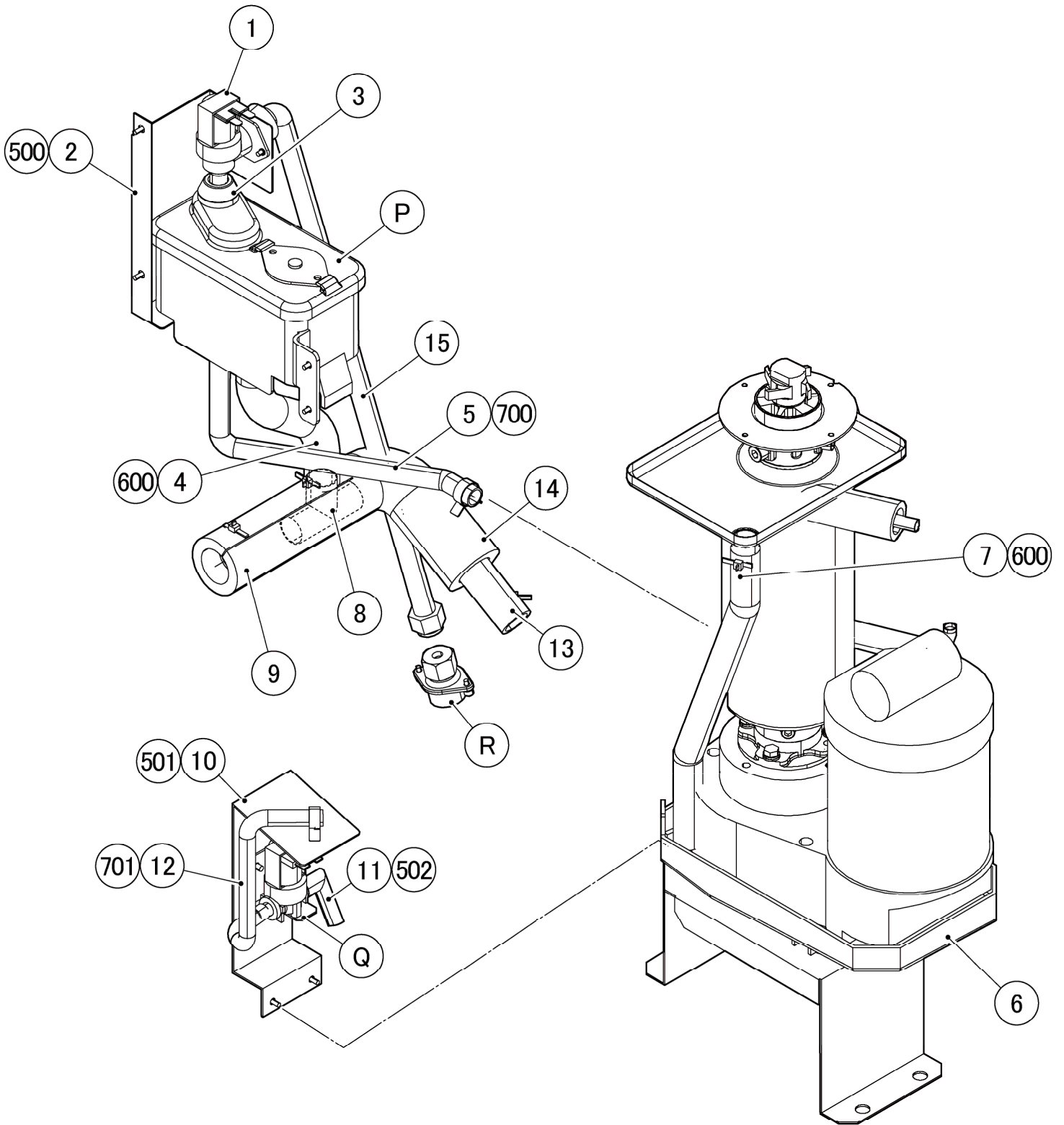










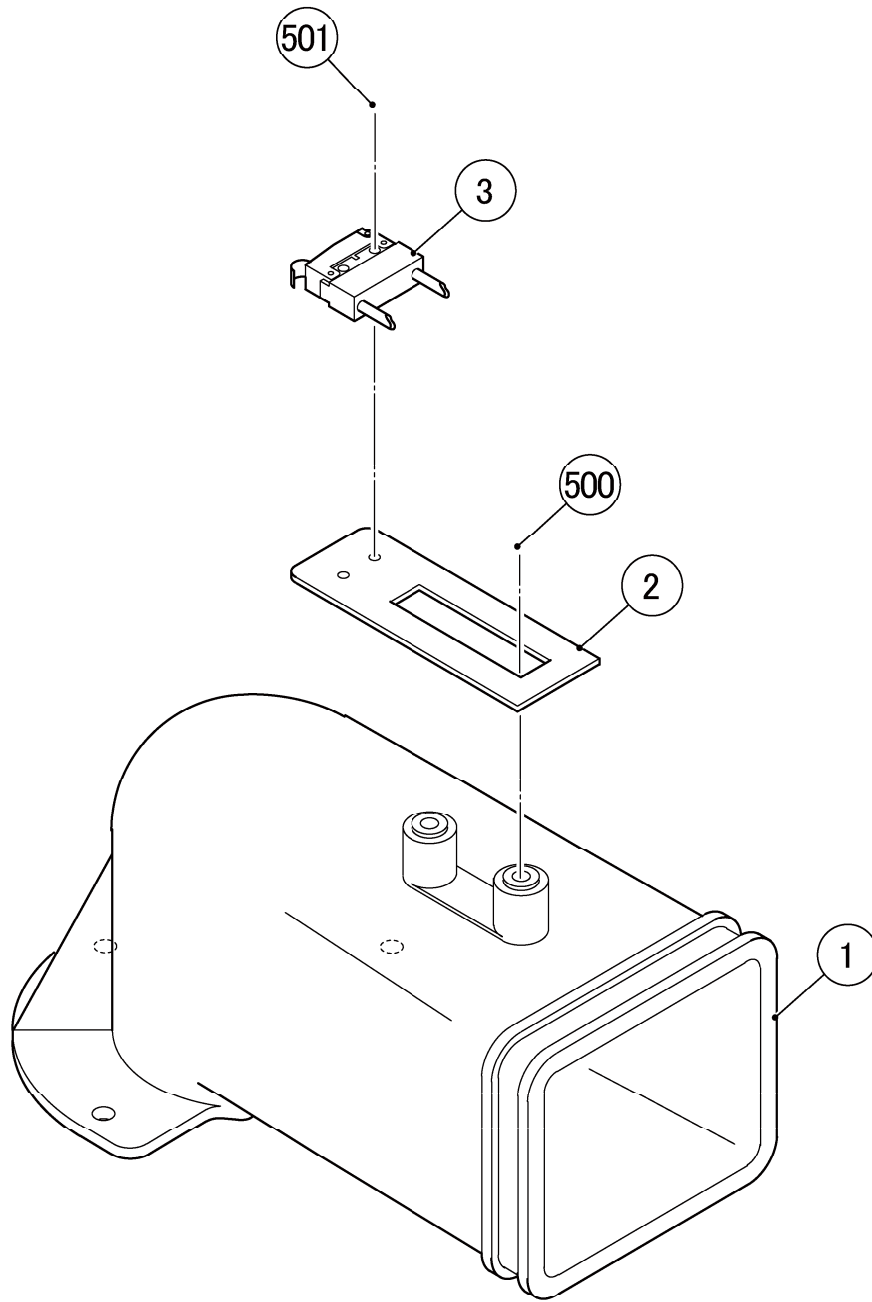




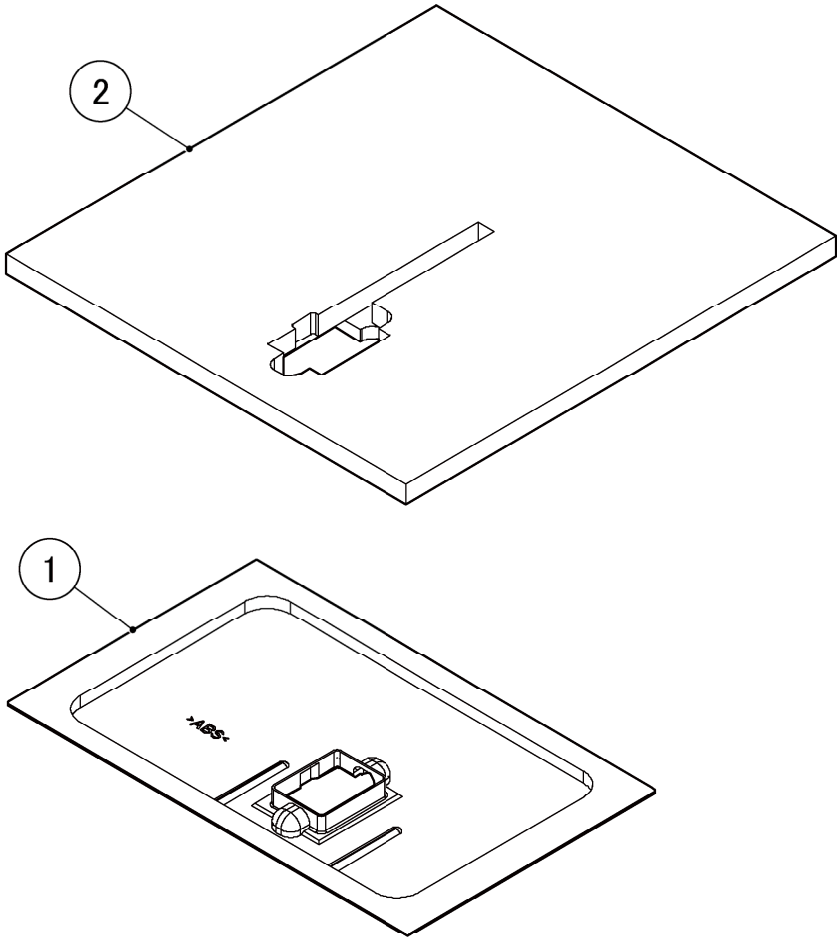
FM-60KE-HC  
CM-50KE-HC

E. SPOUT ASSY

(L-0) and later

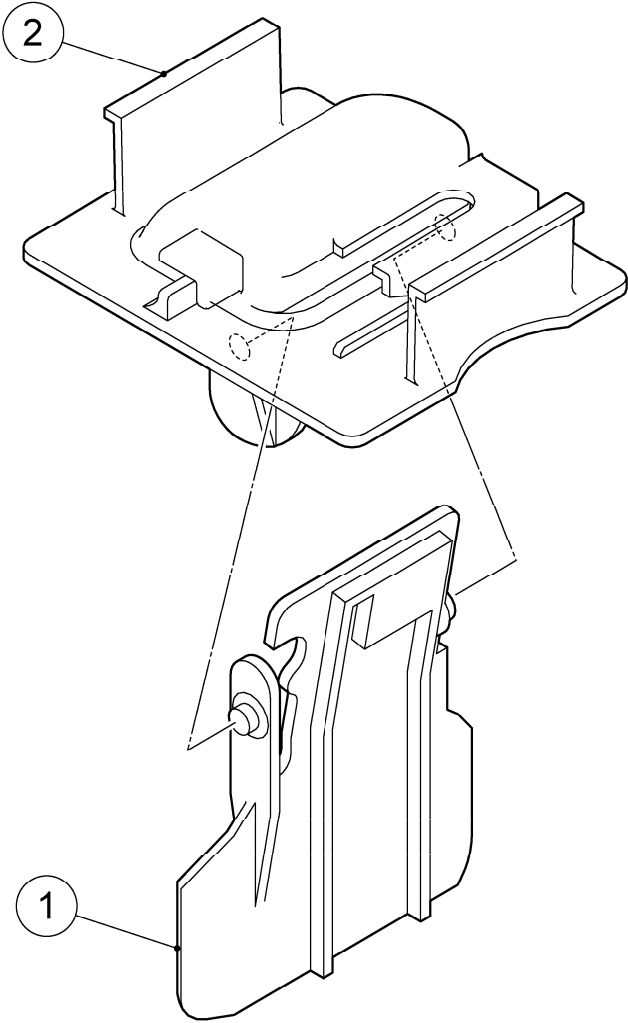




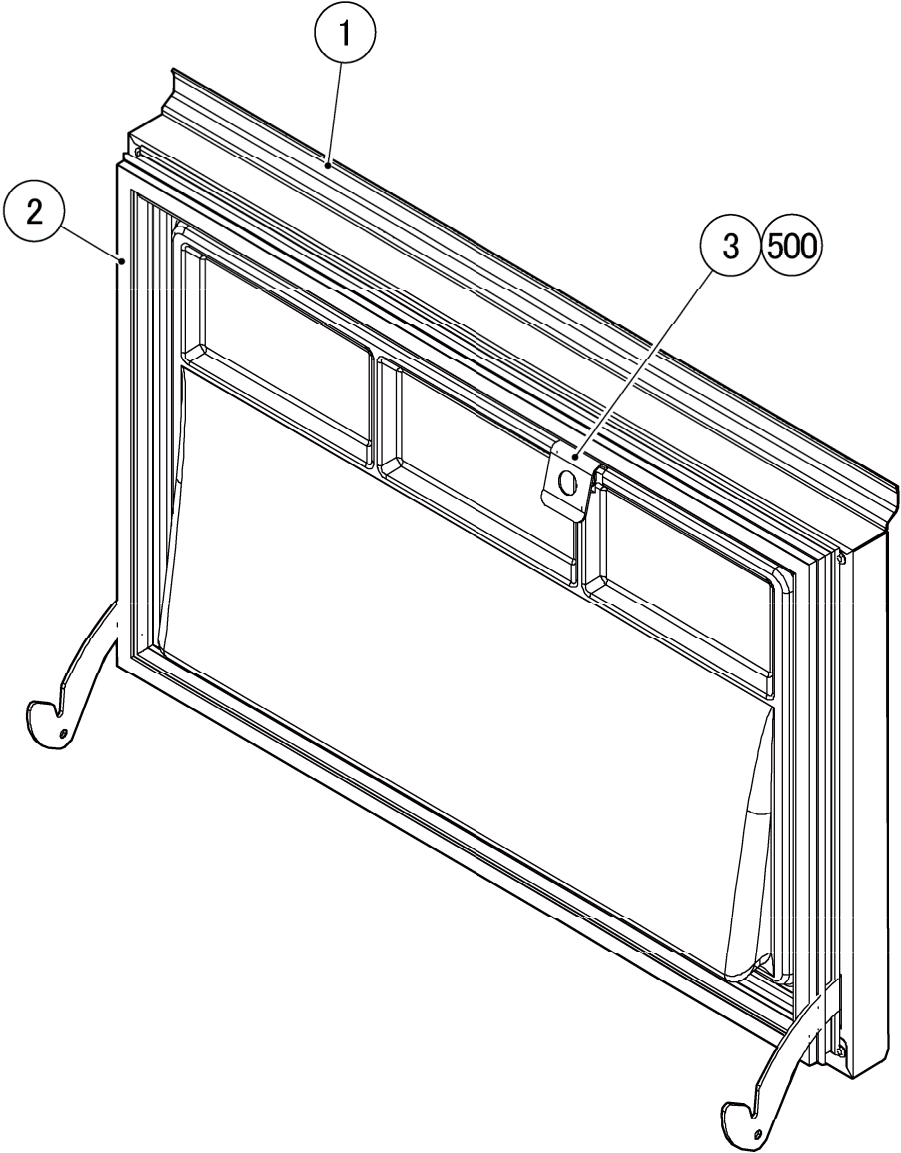




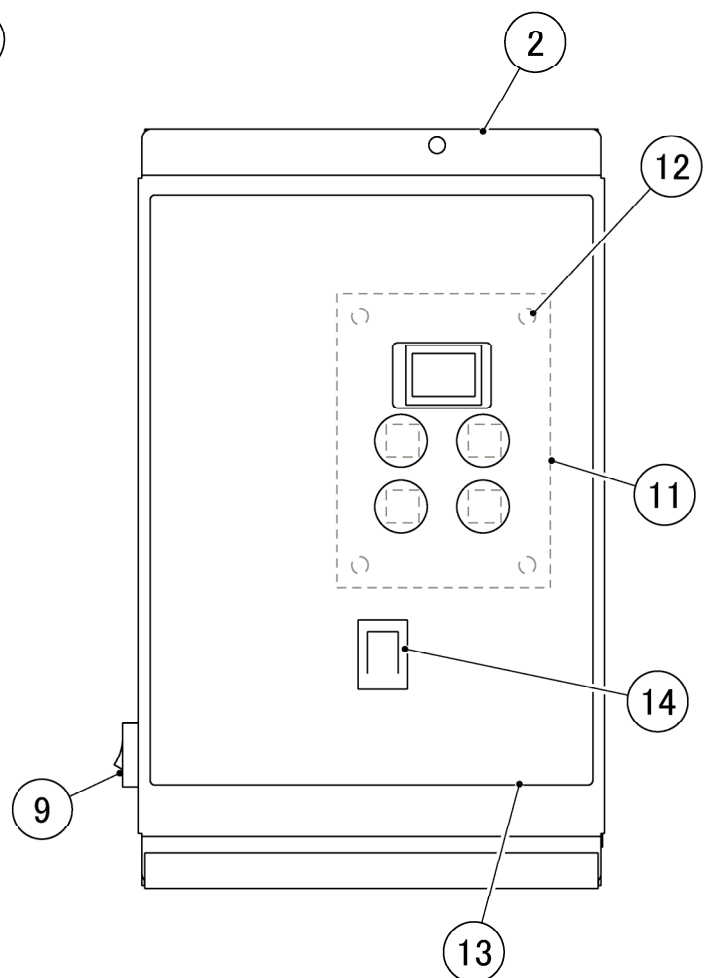
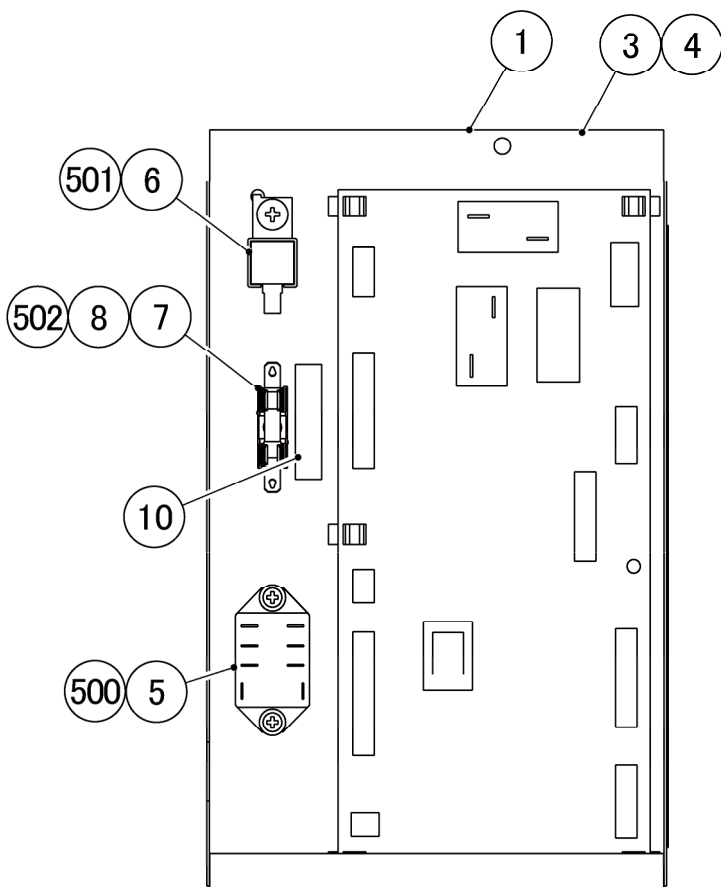
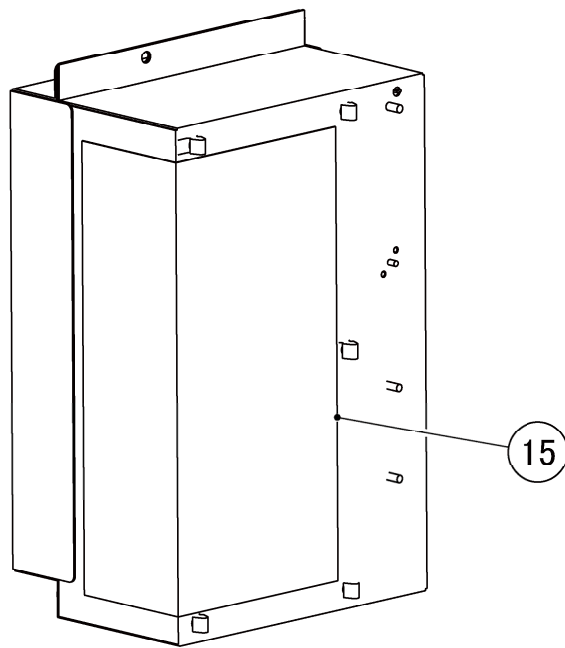




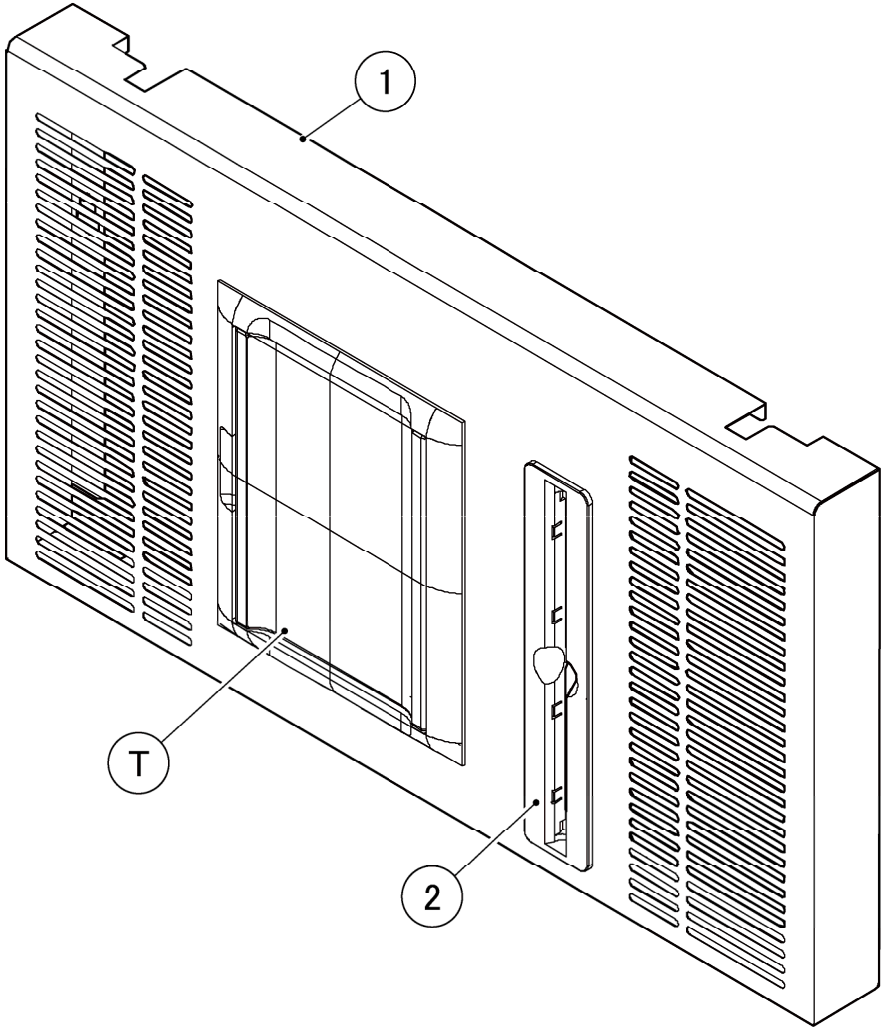






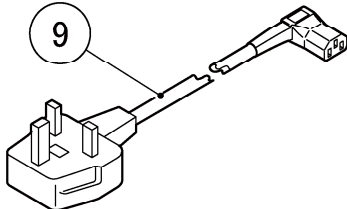
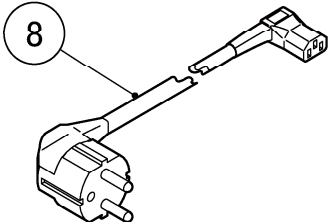
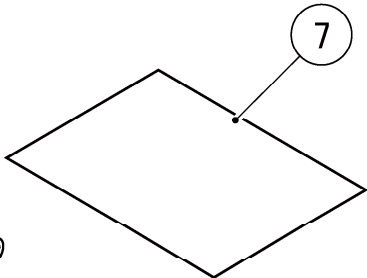
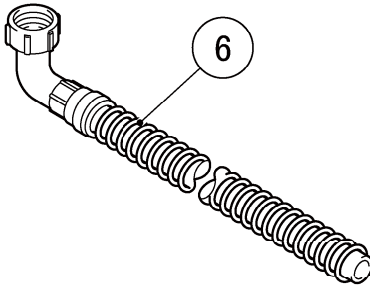
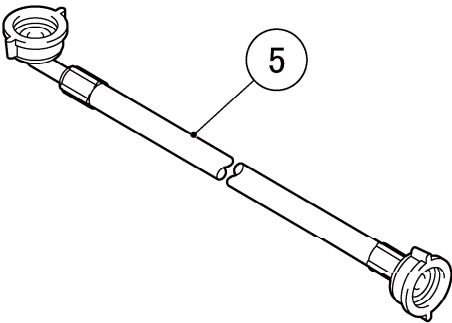
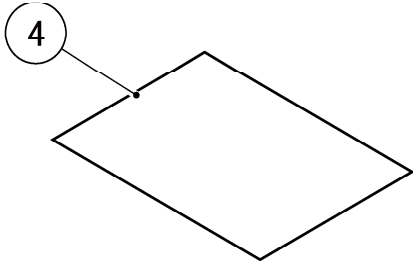
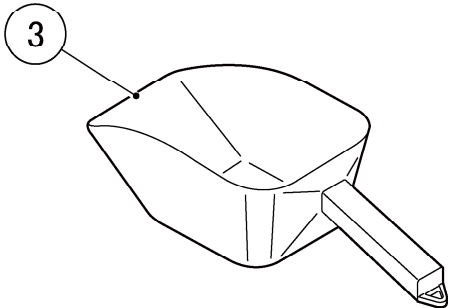
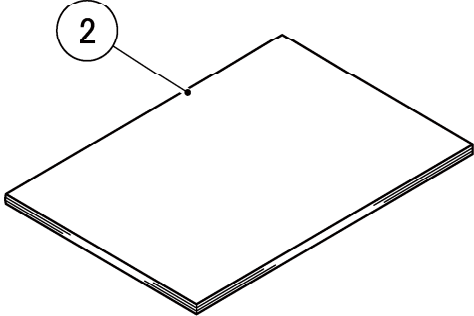
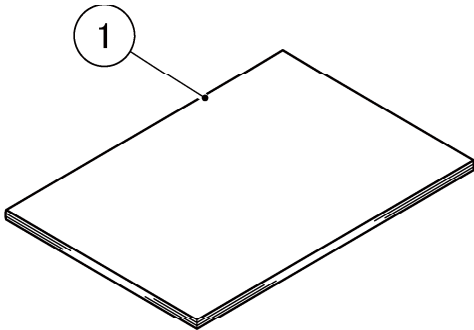




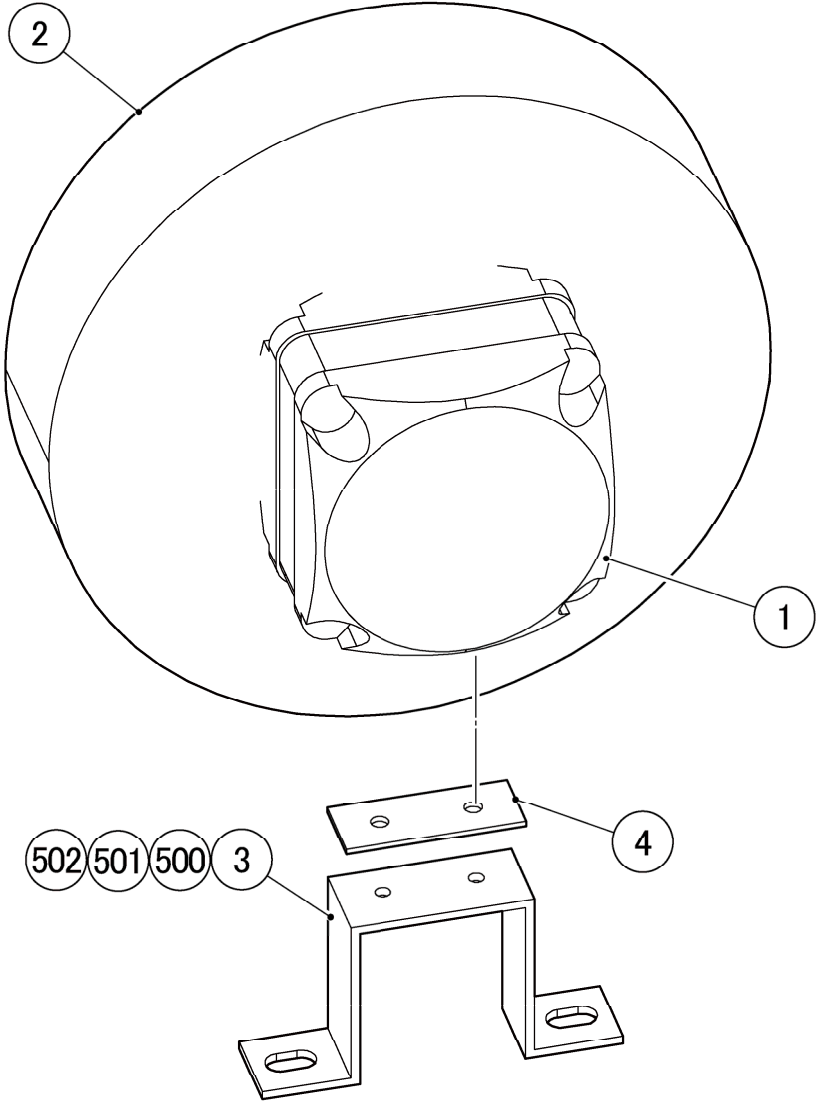














FM-60KE-HC  
CM-50KE-HC

N. EVAPORATOR

(L-0) and later

